

DELIVERY  
SMARTENERGY > RELIABILITY  
SAFETY

# Historic District of Annapolis RM43 Tree Trimming



**BGE**<sup>®</sup>

An Exelon Company

June 2015

# Rule-Making (RM) 43

- Background

- The PSC issued a Notice of Rule Making (RM 43) in January 2011 to consider proposed reliability and service quality requirements for electric utilities serving Maryland residents:
  - The 2011 Maryland Electricity Service Quality and Reliability Act (Act) was signed into law on May 10, 2011
  - The Act required the Maryland Public Service Commission (PSC) to implement new regulations to govern how Maryland utilities manage their reliability efforts
  - BGE, along with other Maryland utilities and key stakeholders, participated in the RM 43 working group with the PSC to discuss the proposed regulations required under the Act from April through October 2011
  - The PSC published the final regulations, which were effective on May 28, 2012



# RM 43 cont'd.

- Tree Management Regulations

- Enhanced tree and vegetation management practices are a large component of RM 43 regulations
- By implementing the requirements enacted by the PSC, BGE will further enhance its already robust tree and vegetation management efforts
- While many of BGE's tree and vegetation management practices will remain the same, the company may need to conduct additional pruning or removal of trees that have previously coexisted with power lines
- BGE will conduct more comprehensive tree and vegetation management along overhead lines located close to the company's substations
  - Substations are important facilities that manage the delivery of power from generating plants to customer homes and neighborhoods
  - This "blue sky" trimming may include the removal of all overhanging tree limbs from the substation fence to the first protective device (breaker, transformer, etc.) located away from the substation



## RM 43 cont'd.

- **Safety and Reliability Benefits**

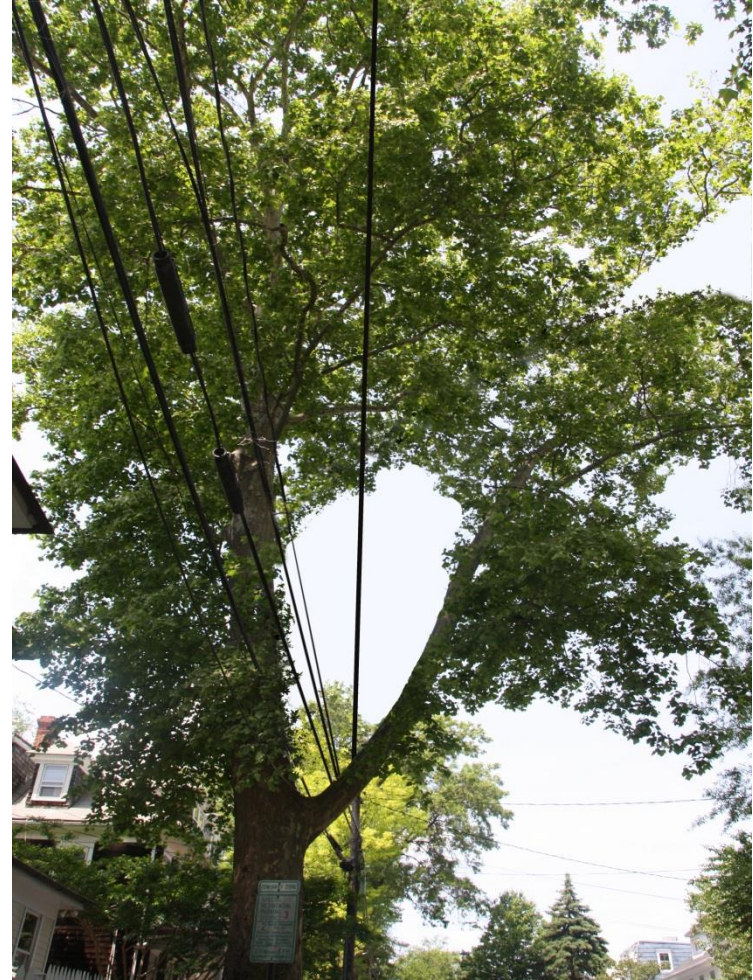
- Proper pruning will promote long-term reliability as the City trees age, become over-mature and begin to shed branches onto the electric facilities.
- Pruning to RM 43/ANSI A300 Standards helps to minimize public safety issues from inadvertent tree to wire contacts that could result in electric touch potential or other electric contacts.
- Pruning to RM 43/ANSI A300 Standards promote long-term tree health and in-time will reduce the amounts of pruning required in the future.
- Achieving proper clearances guided by RM 43 and ANSI A300 help to protect vegetation management personnel who work in the trees from getting too near the wires and risking electric shock or worse.
- Achieving proper clearances reduce the need to obtain outages to accommodate third party pruning requests (from the City of Annapolis or property owners) that are at times difficult to obtain and inconvenient to customers which include government offices, businesses and private residences.



# Survey Results for Historic District

- Private trees (143)
  - Minimal trim: 119
  - No trim: 17
  - Trim > 25%: 7
- Public trees (117)
  - Minimal trim: 84
  - No trim: 6
  - Trim > 25%: 18
  - Removal: 9 \*per City request (Bradford Pears) and subject to change

# Before-and-After Photos (examples)



# Before-and-After Photos (examples)



An Exelon Company

# Before-and-After Photos (examples)





# Before-and-After Photos (examples)



An Exelon Company

# Outreach Strategy

- May
    - BGE and City Forestry conducted a joint survey of each tree that was identified for trimming.
  - June
    - Met with City Forestry to review and discuss survey results.
    - Met with Chief of Historic Preservation to share results.
    - Met with the Mayor and Ward 1 Alderman to share results and discuss outreach.
    - Present to the Environmental Matters Committee.
  - July
    - Attending Mayor meetings.
  - September
    - Host Open House for Ward 1 residents.
    - Direct mail to customers.
  - October
    - Door hangers prior to trimming.
- ❖ Individual outreach to property owners will take place to address trimming on privately owned trees.



# BGE Contribution

- BGE contributed \$48,000.00 to the Arbor Day Foundation to support the City of Annapolis' replanting efforts. In addition, BGE has also agreed to remove Bradford Pear trees (a City initiative) equating to ~\$25,000.00.
  - The City has requested the Foundation to provide a direct cash payment in lieu of plantings.
  - The City must coordinate new plantings with BGE to ensure “The Right Tree Right Place” program is followed.
  - <http://www.bge.com/safetyreliability/reliability/treetrimming/Pages/Choosing-the-Right-Tree.aspx>

