



City of Annapolis
Department of Public Works

Solid Waste Best Practices

Environmental Matters Committee

October 16, 2014



Current State of Solid Waste Mgmt

- Coordinated refuse and recycling collection
- Weekly yard waste collection
- Electronic items recycling - drop-off service
- Larger recycling containers (64-gallon Toters)
- Mandatory recycling ordinance
- Current cost - \$323/year (\$26.92/month) for unlimited service





Recycling Rates in City

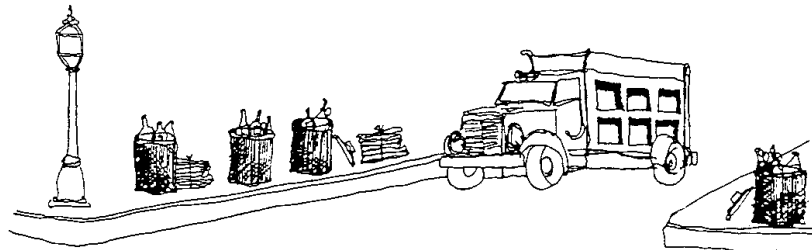
<u>Month</u>	<u>Monthly Diversion</u>	<u>12-mo. Diversion Avg.</u>
Jan 2014	37.3%	37.6%
Feb 2014	35.3%	38.1%
Mar 2014	37.0%	38.4%
Apr 2014	42.4%	38.9%
May 2014	39.7%	38.9%
Jun 2014	49.1%	40.1%
Jul 2014	44.7%	40.7%
Aug 2014	46.7%	41.7%
Sep 2014	39.2%	42.0%
Sep 2013	34.2%	37.6%



Solid Waste Diversion Goal

DPW Goal is to “increase the solid waste diversion rate to 50%.”

The long-term diversion goal should be in the 70-80% range.





Recycling Revenue

2013 Revenue:	\$40,613
2014 Revenue (year-to-date):	\$27,255





Best Practices

1. Education and Outreach
2. Pay as You Throw
3. Food Waste Disposal
4. Yard Waste Collection





Education and Outreach

1. Semi-annual informational mailers to all customers
2. Work with elementary schools, providing educational materials
3. Focused information and educational materials to non-English speaking citizens





Pay as You Throw

- Service cost is based on amount of refuse generated
- True PAYT: all charges are based on usage amounts
- Hybrid PAYT: base rate for base services (e.g. 3 bags per week), with usage charges for higher services





Pay as You Throw Models

1. Bags – residents must buy and use approved trash bags for refuse disposal
 - Example: 33-gallon bags - \$2/each, 15-gallon bags - \$1/each, 8-gallon bags - \$0.50/each
2. Stickers – residents must buy and place stickers for each trash bag, regardless of size
 - Example: Stickers - \$1/each
3. Containers – monthly cost depends on container size
 - Example: 17-gallon cart - \$5.00/mo, 35-gallon cart - \$10.00/mo, 65-gallon cart - \$20.00/mo, 95-gallon cart - \$40.00/mo
 - Overfilled carts not collected. Overflow bags can be purchased.



Pay as You Throw Pros and Cons

Advantages:

- Fairness - residents pay based on use of solid waste services
- Increased Recycling - residents have incentive to recycle
- Waste Reduction - greater awareness of recyclable packaging, excessive packaging, and alternatives to disposable products

Disadvantages:

- Implementation Cost
- Bags and stickers must be purchased by residents (hassle factor)
- Extensive public education and outreach is required



Food Waste Disposal

- The final frontier of recycling: waste reduction by recycling food waste
- Approximately 18% of total waste stream (about 30 million tons per year)
- Weekly collection of issued food waste containers
 - Curbside collection
 - Central location drop-off
- Two interested composting companies
- Recommend pilot project in select neighborhood



Yard Waste Collection

- Currently, residents may place yard waste in containers, plastic bags, and paper bags
- In near future, we expect that plastic bags will no longer be accepted
- The plastic de-bagger causes significant diversion of yard waste material to waste stream
- Paper bags can be processed with the yard waste
- This will be a significant cost issue for many residents.



Future of Solid Waste

Streams:

1. Recycling (all of today's recycling and refuse except food waste)
2. Compostable (includes yard and food waste)
3. Electronics and appliances
4. Construction and demolition debris

