

Annapolis Fire Department



Douglas M. Remaley
Chief

R. Nathan Powell, IV
Deputy Chief – Operations

Matthew M. Lopez
Deputy Chief – Administration
Professional Standards

AFD Goals for 2026 - 2030

1. Goals over next five years.
2. How can the Public Safety Committee assist in achieving the goals?
3. How does the AFD prefer the Public Safety Committee to interact with the AFD?

Mission Statement



The Annapolis Fire Department serves the residents and visitors of Annapolis by delivering prompt and professional emergency medical services, fire protection, and public safety services to safeguard life, property, and the environment.

Insurance Services Office (ISO) Rating – Class 1



- Annapolis Fire Department is Exceptional!
 - We are ONE of only THREE Class 1 Departments in the State of Maryland
 - There are only 388 credentialed Class 1 Fire Departments in the Nation, out of approximately 30,000 departments.



AFD Budget Overview

- FY26 Budget - \$27,648,400*
 - (\$2,087,200 for Overtime)
 - (\$1.711 million for Operating expenses)
 - (\$785,400 Two Boiler Replacements to Central Svc-Facilities Budget)
 - (\$776,500 Vehicles Repair & Maintenance to Central Svc Budget)
 - (\$52,000 Independent Contractor Agreement - Medical Director)

*approximately 93% of annual FY budget is salaries and benefits



AFD Staffing Overview

- Authorized Positions
 - 144 FTE
 - Uniform – 137
 - Civilian – 7
 - Medical Director – 1 (Independent Contractor Agreement)

Services



- Emergency Medical Services
- Fire/Rescue
- Hazardous Materials / Technical Rescue
- Marine Operations
- Swiftwater / Dive Rescue
- Explosive Services
- Fire/Arson Investigation
- Code Enforcement
- Public Education
- Bike Medics
- Tactical Medics
- Youth Firesetters Intervention Program



Operations Daily Minimum Staffing

25 Personnel Assigned Per Unit:

Forest Drive – Station 35 (6 personnel)

- Battalion Chief – BC35
- Engine 351
- Medic 35

Eastport – Station 36 (8 personnel)

- Engine 361 (cross staffs Fire Boat 36)
- Truck 36 (cross staffs Medic 36 Bravo)
- Medic 36

Taylor Ave – Station 37, 38, 39 (8 personnel)

- Engine 381 (cross staffs Rescue Squad 38)
- Truck 39 (cross staffs Technical Rescue 38)
- Medic 39

Annapolis Neck Station - Station 48 – AA County Station 8 (3 personnel)

- EMS Supervisor
- Medic 48

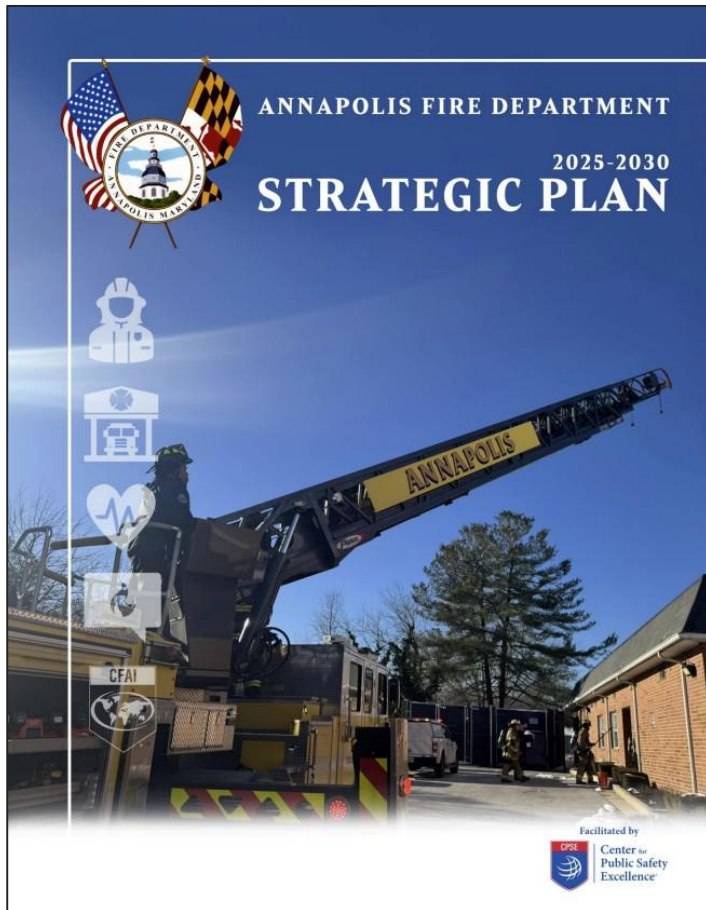
Response Statistics - 2025



- 13,139 Total Responses for CY2025
 - EMS 9,553
 - Fire 3,371
 - Hazmat 19 (Chemical Leaks, Suspicious Odors, Liquid Spills, Carbon Monoxide)
 - Rescue 146
 - Other 50 (Service calls, Investigations)

Question 1:

Annapolis Fire Department Goals



Strategic Planning Document

Establish Mission, Values and Vision Statements

Five New Agency Goals

Strategic Planning Document

Five Goals

Objective Performance Measures for Each Goal

Specific, Measurable, Achievable, Relevant and Timely (SMART) Tasks for Each Objective

Strategic Planning Goals

- 1: Develop a skilled, diverse, and resilient workforce through ongoing training, leadership growth, and effective recruitment, ensuring operational excellence and community safety.
- 2: Develop a capital improvement plan that encompasses facilities, equipment, PPE, and information technology that allows for budgetary planning and supports operational efficiency and efficacy.
- 3: Enhance the health, safety, and wellness of our employees by supporting their social, physical, and emotional wellbeing throughout their employment and into retirement through enhanced programs.
- 4: Develop a community engagement program to better educate and inform the public about the services provided and increase awareness of the department's activities.
- 5: Prepare for, pursue, achieve, and maintain international accreditation to better serve our community and embrace excellence through continuous improvement management.

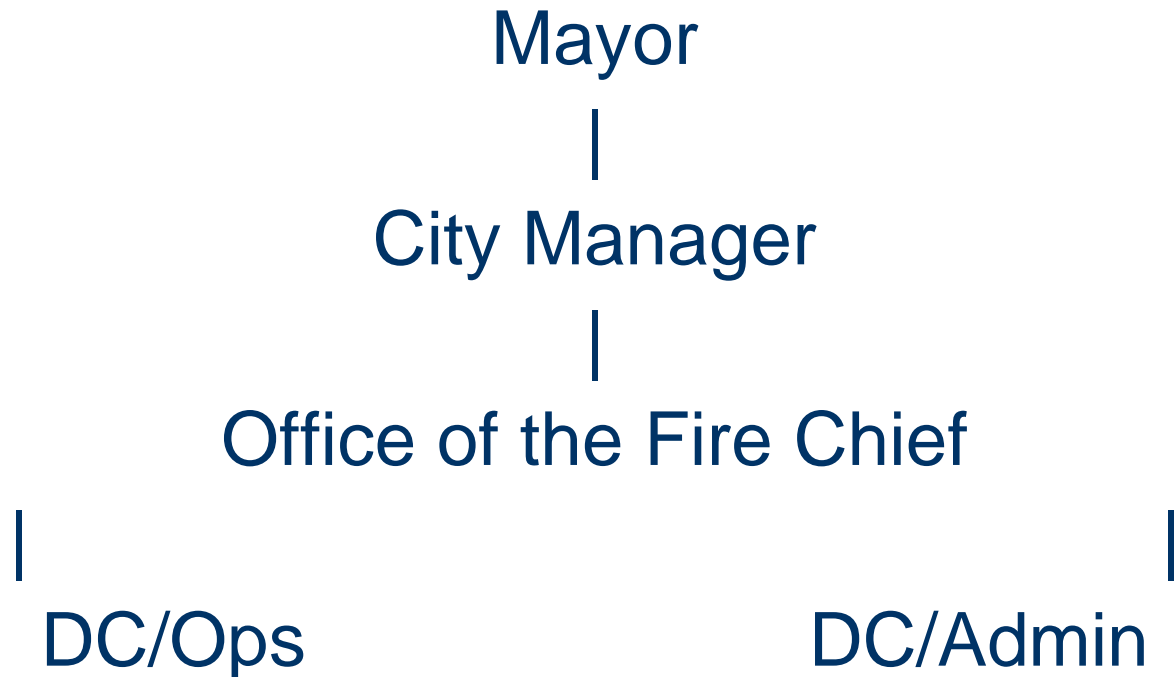
Question 2: Public Safety Committee Assist

How can the PSC assist in achieving Goals of the Strategic Plan?

- Review Strategic Plan
- Provide Support and Direction to AFD
- Endorsement of Recommended Improvements to full Council for Adoption

Question 3: PSC Interaction with AFD

AFD uses the Chain of Command for all communication.



A firefighter in full gear, including a yellow helmet and reflective stripes, is climbing a red and white ladder against a brick wall at night. The scene is illuminated by a strong red light, likely from a fire. The firefighter is positioned in the center-left of the frame, reaching up towards a doorway. The brick wall is visible on both sides of the doorway. The overall atmosphere is one of emergency response.

QUESTIONS ??

THANK YOU FOR SUPPORTING THE ANNAPOLIS FIRE DEPARTMENT