



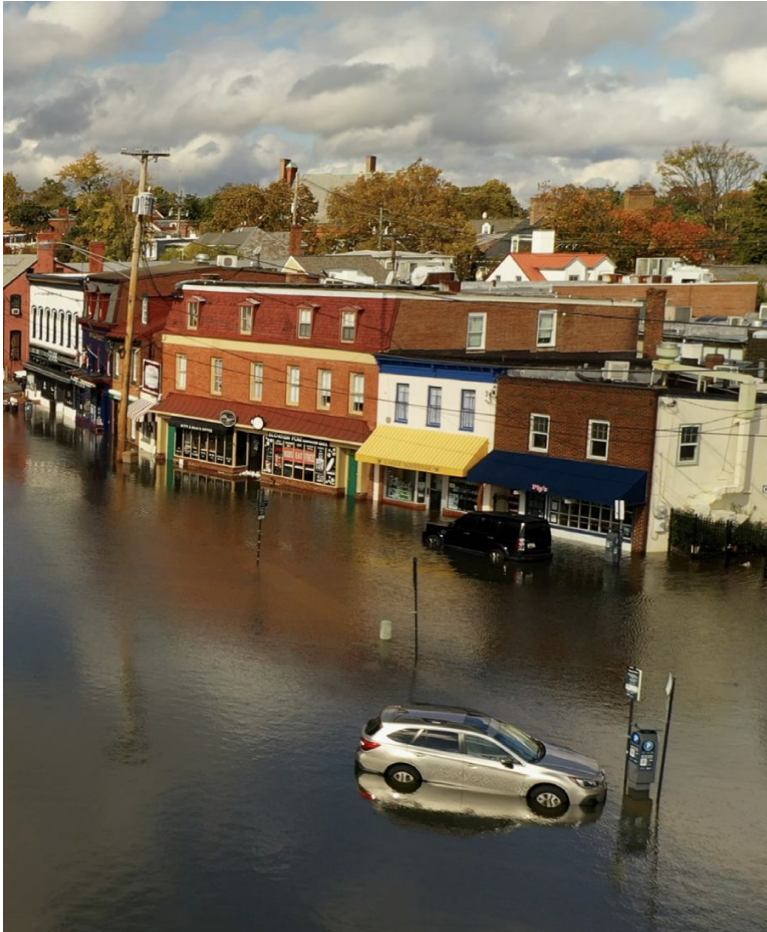
IMPACT REPORT | 2025

RESILIENCE
AUTHORITY

Annapolis and Anne Arundel County

resilienceauthority.org

Arundel Center, 44 Calvert St., Annapolis, Maryland



In Focus

- 01 Our History
- 02 Our Mission
- 03 How We Work
- 04 Our Impact
- 05 Financial Overview
- 06 Project Highlights

History of the Resilience Authority



2018 | Finance Assessment

In 2018, the City of Annapolis participated in a pilot Resilience Financing Assessment, which was designed to identify the key elements and processes needed for communities like Annapolis to develop comprehensive local resilience implementation and financing strategies.

2020 | Senate Bill 457

Passed on May 8, 2020, Maryland's Senate Bill 457 (Chapter 236) authorizes local governments to establish and fund a Resilience Authority under local law, outlines the requirements to do so, and specifies the powers local governments may grant to an Authority.

2021 | Bill 31-21

On June 8, 2021, Anne Arundel County Council, then Annapolis City Council passed legislation to create the nation's first multi-jurisdictional Resilience Authority to finance and support the construction of resilience infrastructure.



PHOTO: DAVID DEVAULT

Accelerate the planning, financing, and delivery of resilient infrastructure in the City of Annapolis and Anne Arundel County to protect and future-proof the region from climate impacts.

Our Mission

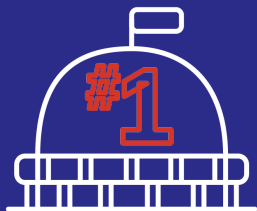
2025 Highlights: A Year of Momentum

- Secured an additional \$36.2M.
- Advanced 13 projects.
- Avoided \$68.2 million in climate-related damages.



PHOTO: JULIAN JACQUES

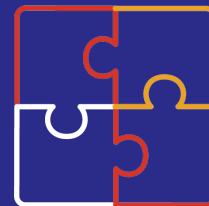
What Makes Us Unique



**First-of-its-kind
Governance Model**



Hyper Focus on Resilience



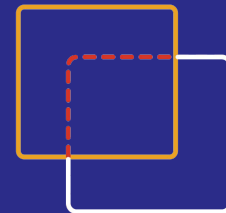
**Capacity That Complements,
Not Competes With,
Local Agencies**



**Reduce Burden
on Local Budgets**



**Freedom to Innovate in
Procurement and Delivery**



**Built-in Transparency
Measures**

Project Focus Areas



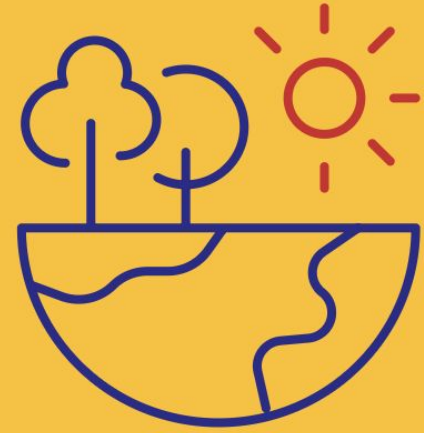
Communities & Infrastructure

We strengthen the resilience of public and private infrastructure—protecting essential services, reducing risks from flooding, heat, and storms, and ensuring communities remain safe, connected, and adaptable in the face of environmental change.



Energy Resilience

We partner with the City and County to reduce overall energy demand and expand the use of clean, renewable energy—advancing a more reliable, efficient, and low-carbon energy future for the region.



Nature & The Environment

We restore and protect natural infrastructure—wetlands, forests, floodplains, shorelines, and other critical ecosystems—to reduce disaster risk, absorb carbon, and build resilient landscapes that support cleaner air and water, wildlife habitat, recreation, and long-term community well-being.

Leadership and Governance

BOARD OF DIRECTORS

Appointed by the Mayor of Annapolis:

- Nathan Betnun
- Mariah Davis
- Jared Littmann^{**}

Appointed by the Anne Arundel County Executive:

- Jamie Benoit
- Véronique Bugnion
- Christopher J. Burgess^{*}
- Emily Clifton
- Eileen Fogarty^{*}
- David Jarrell
- Stacy Schaeffer
- Mike Sewell
- Teresa Sutherland^{**}

OFFICERS OF THE BOARD

Véronique Bugnion, Chair Nathan Betnun, Vice Chair Teresa Sutherland, Treasurer^{**} Emily Clifton, Secretary

^{*} New board member as of December 2025

^{**} Served partial year 2025

ADVISORY COMMITTEE MEMBERS

The Anne Arundel County Budget Officer

The Anne Arundel County Director of Emergency Management The Anne Arundel County Director of Public Works

The Anne Arundel County Director of Recreation and Parks The Anne Arundel County Planning and Zoning Officer

The Anne Arundel County Senior Environmental Policy Officer The City of Annapolis Director of Central Service

The City of Annapolis Director of the Office of Emergency Management The City of Annapolis Director of Parks and Recreation

The City of Annapolis Director of Planning and Zoning The City of Annapolis Director of Public Works

Community Planning Liaison Officer Naval Support Activity Annapolis

The Deputy City Manager for Resilience and Sustainability at the City of Annapolis



PHOTO: JULIAN JACQUES

Our Impact

\$50.3 million

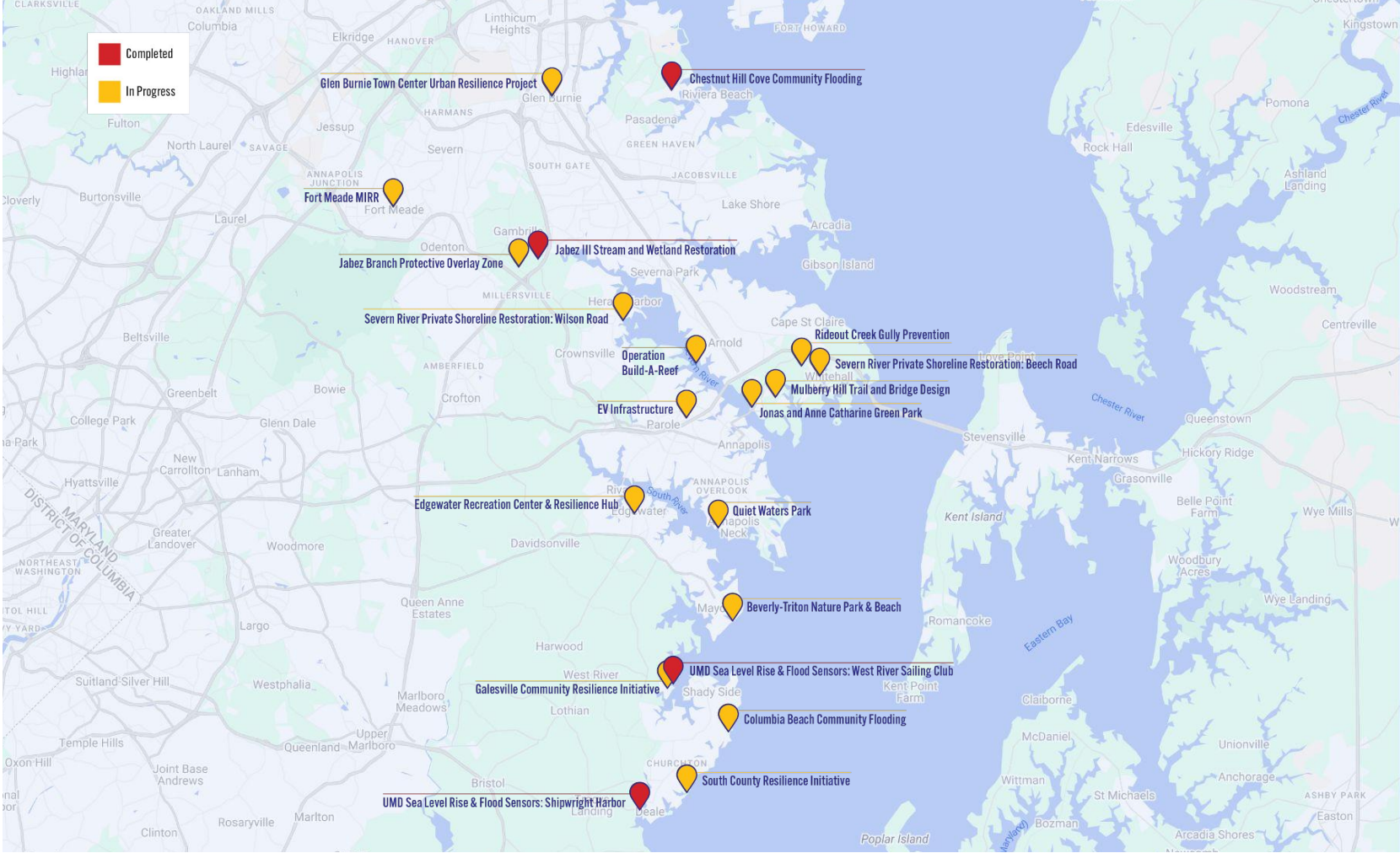
for resilient infrastructure projects since inception*

**Includes \$2.1 M in project funding secured by the Resilience Authority for local projects but because the funds did not flow through the Authority, they do not appear in the audited financial statements.*

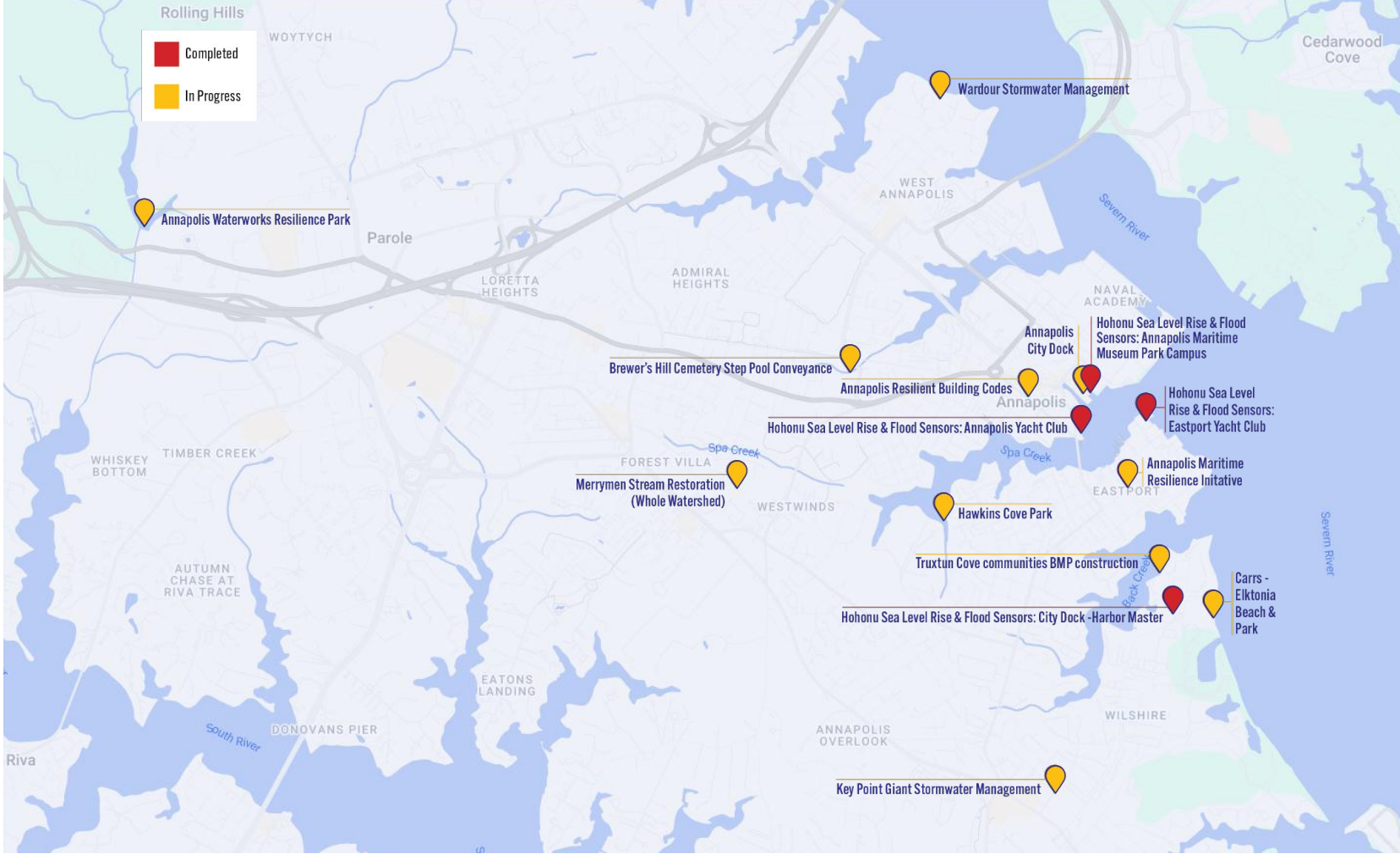
32 total projects

\$68.2 million savings
from avoided climate-related damages

Our Projects: County Sites



Our Projects: City Sites



Financial Overview: **Funding and Investments**

TOTAL RAISED FOR INFRASTRUCTURE PROJECTS

\$50.3 million

TOTAL INVESTED IN INFRASTRUCTURE PROJECTS

\$14.2 million

PROJECTS COMPLETED in 2025

2

TOTAL PROJECTS COMPLETED

8

IN 2025, WE RAISED

\$36.7 million

FOR INFRASTRUCTURE PROJECTS

IN 2025, WE INVESTED

\$5.7 million

TO FUND INFRASTRUCTURE PROJECTS

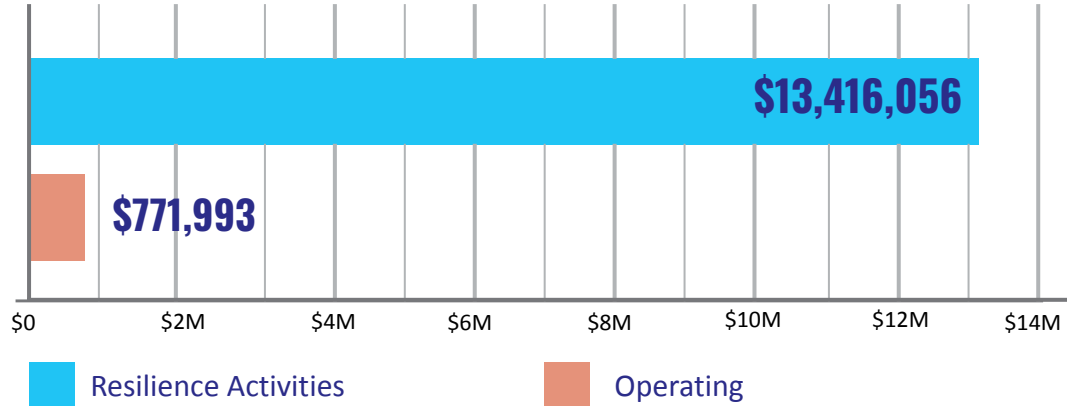
Financial Overview: Cumulative Allocation of Expenses

SOURCES OF REVENUE (Federal, State, Local, Private, Interest)



- Grant Funding = \$49,037,048.39
- Private Investment = \$1,242,710.73
- Taxes and Fees = \$0
- Project Based Revenue = \$0
- Asset Based Revenue = \$14,871

PROGRAM INVESTMENTS (Resilience Activities, Operating)



94¢ of every dollar raised is invested in projects.



PROJECT HIGHLIGHTS | 2025

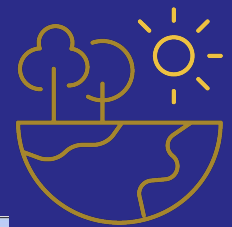
RESILIENCE
AUTHORITY

Annapolis and Anne Arundel County

resilienceauthority.org

Arundel Center, 44 Calvert St., Annapolis, Maryland

The Whole Watershed Pilot



The SEVERN Watersh...
Gabe Cohee

Year One

- Severn River Association
- City of Annapolis
- Center for Ecosystem Recovery
- Breaking Boundaries Environmental (BBE)
- Spa Creek Conservancy
- Severn Riverkeeper
- Oyster Recovery Partnership

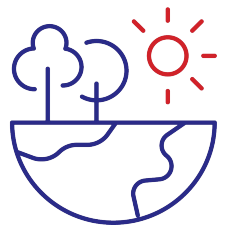
Year Two (PROPOSED)

- City of Annapolis
- Severn RiverKeeper
- Spa Creek Conservancy
- Oyster Recovery Partnership
- Severn River Association
- Center for Ecosystem Recovery
- Breaking Boundaries Environmental

The map displays the Severn River watershed with various locations labeled, including Gambrills, Severna Park, Herald Harbor, Crownsville, The Downs, Rolling Hills, Parole, Annapolis, and others. Project sites are marked with colored pins: brown for Year One and green for Year Two (PROPOSED). The map also shows the Magothy River and several beaches like Chelsea Beach and Arundel Beach.

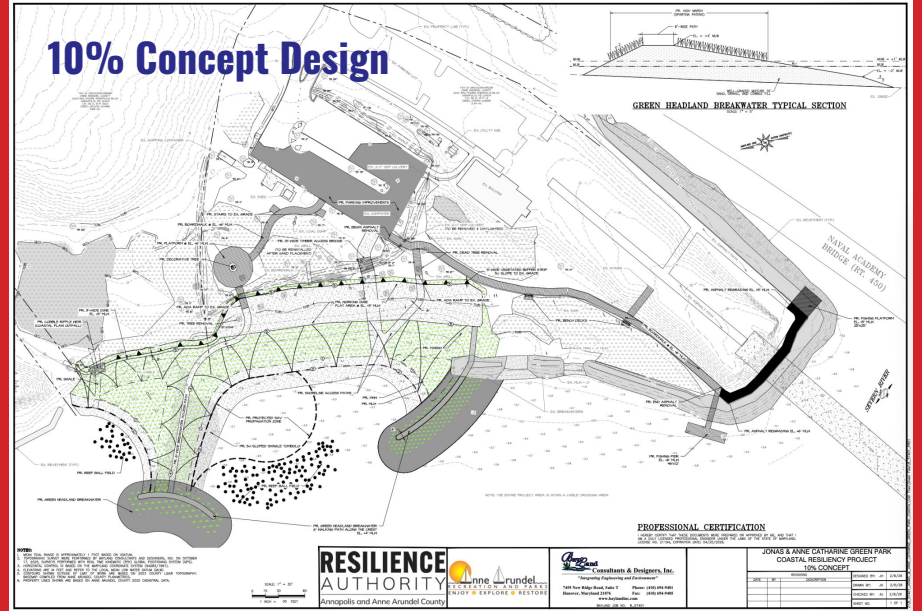
Jabez Coastal Floodplain Rehabilitation

Completed



Jonas Green Coastal Restoration

Design



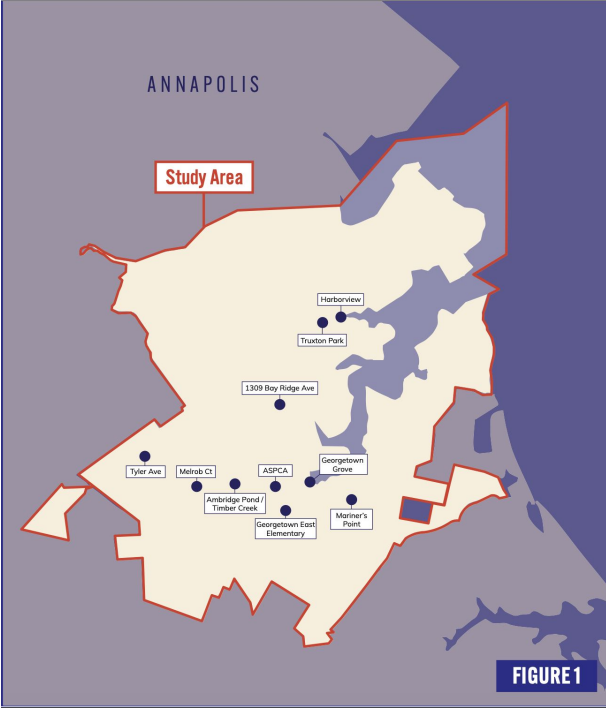
Carrs and Elktonia Beach

Permitting



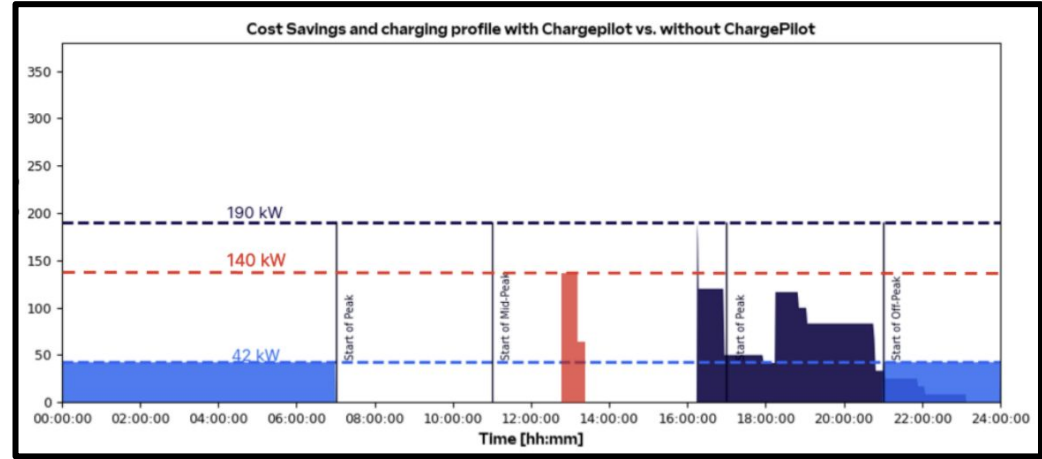
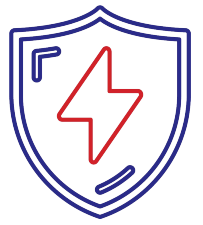
Annapolis Maritime Resilience Initiative

Design



Fleet Charging Infrastructure

Permitting



\$350,000 in annual utility savings while reducing required capacity by 2.5 MW across all sites.

Energy Modernization | Solar Development

Awarded

Anne Arundel County

- \$3,562,601 for Solar in AACO
- \$737,497 for energy upgrades

City of Annapolis

- \$108,500 for energy assessment
- \$300,000 for Streetlight LED Retrofit



932 and 937 Spa Road Site Remediation

In Review



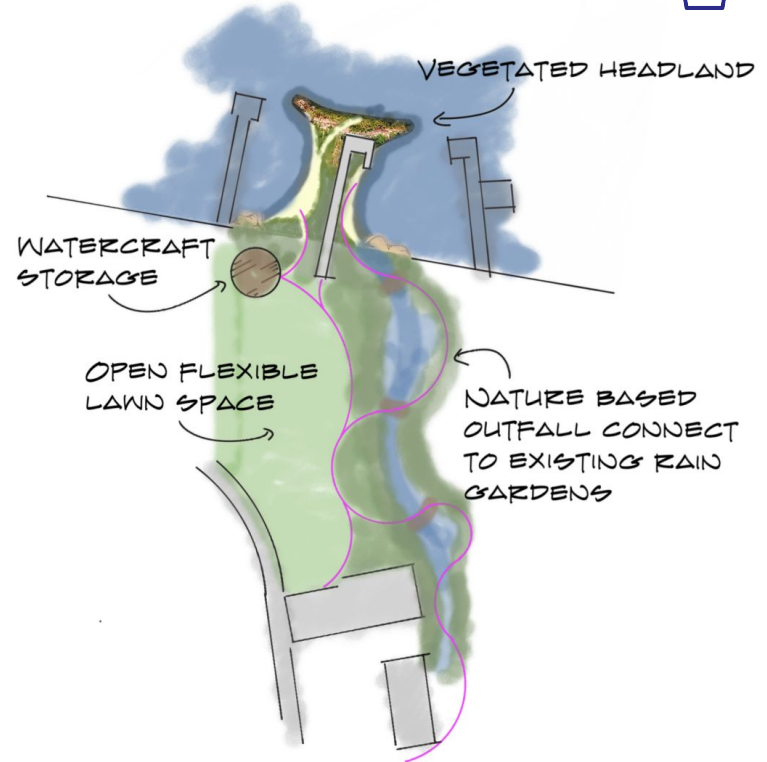
Technical Assistance - Natural Infrastructure

In Progress



Harnessing Nature to Reduce Risk

- Providing hands-on technical assistance to help governmental partners, communities and homeowners.
- Assess opportunities for natural infrastructure solutions that reduce flood risk, restore ecosystems, and generate long-term resilience and economic value.

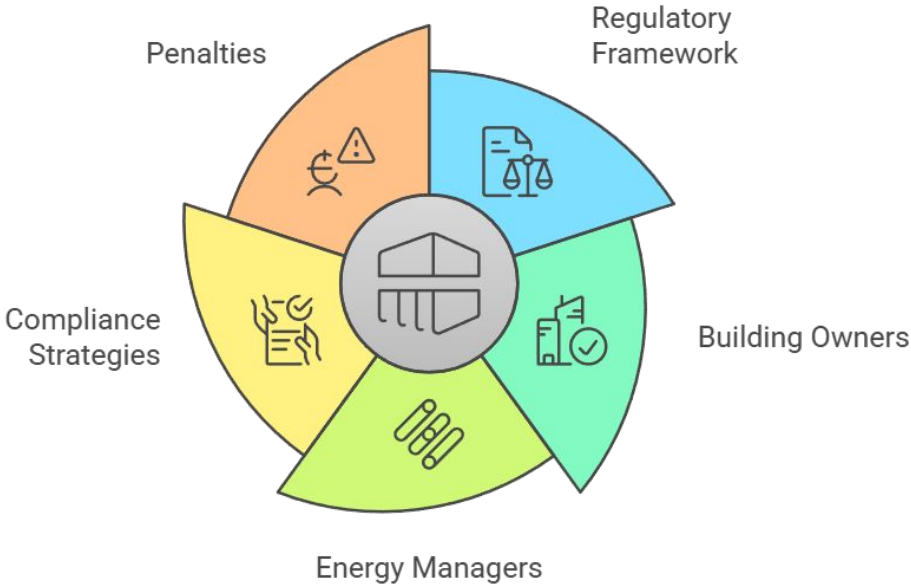


Building and Energy Performance Standards

Paused | DOE Grant Terminated



Understanding Maryland's BEPS



Resilient and Ready Project Portfolio

In Progress

A portfolio of projects that prioritizes high-impact, cost-effective opportunities for the Resilience Authority and the jurisdictions it serves.

- Project & Funding Database
- Project Tracking and Coordination
- Resource Library
- Public-Facing Summary Dashboard



Water Level Sensors

Installed

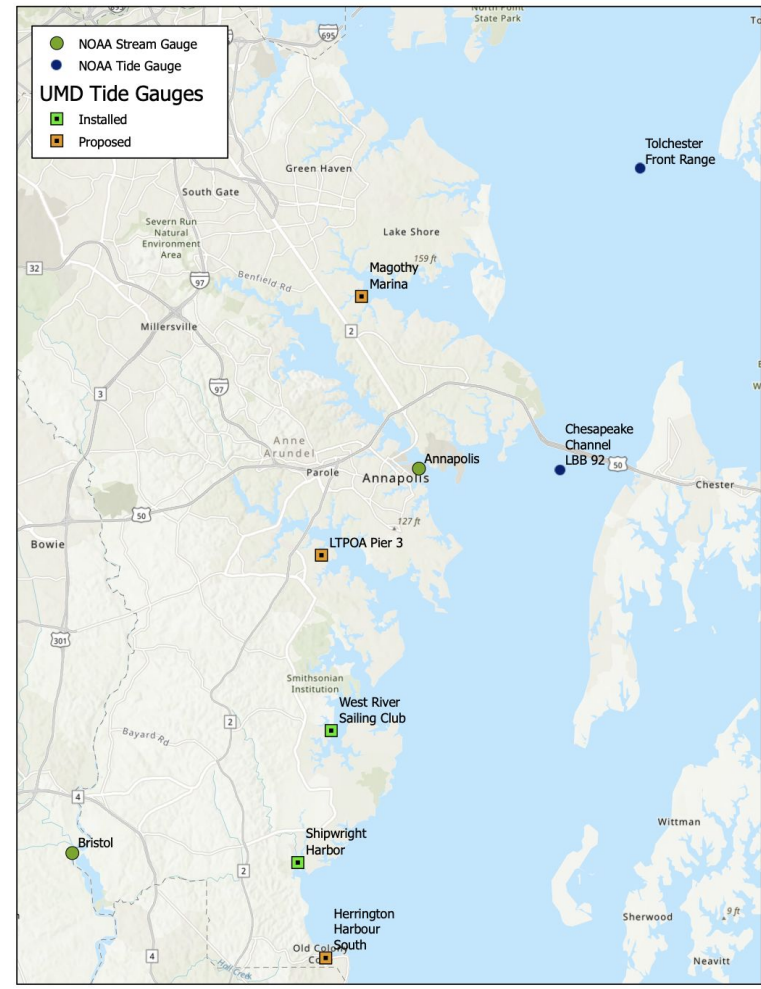
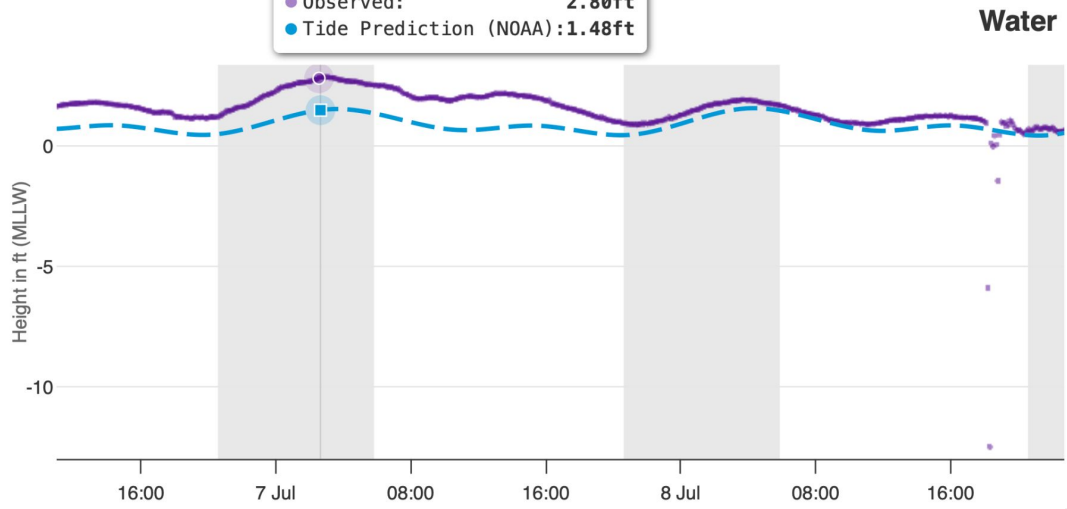
West River Sailing Club, MD

Now: 0.88 ft. MLLW ▾

Last Updated: 9 minutes ago



Monday, Jul 07, 02:30 EDT / UTC-4
● Observed: **2.80ft**
● Tide Prediction (NOAA): **1.48ft**



- **Merryman Stream Restoration** | FY26 Whole Watershed funding supports stream restoration to protect sewer infrastructure, reduce erosion, enhance habitat, and improve water quality.
- **Brewer Hill Cemetery (SPSC)** | FY26 Whole Watershed funding supports procurement of construction for a step pool stormwater conveyance system—addressing erosion while avoiding impacts to grave sites.
- **Hawkins Cove** | FY27 implementation of living shoreline and stormwater management through the Severn Whole Watershed partnership.
- **Northwest Park** | Submitted to National Fish and Wildlife Foundation Small Watershed Grant (under review) as part of a College Creek watershed project.
- **Holly Beach Farm** | In partnership with Maryland Department of Natural Resources, submitted proposals to Chesapeake WILD and NCRF for living shoreline design and implementation to address erosion, restore habitat, and expand public access.
- **Ambridge Pond / Tinkers Creek / ASPCA Sites** | Identified as high-priority through AMRI; included in federal earmark requests and NCRF pre-proposal for design and implementation.
- **NSA Annapolis Military Installation Resilience Review (MIRR)** | Supporting the implementation of infrastructure projects identified to mitigate flooding and sea-level rise. Translating the study's findings into funded, actionable projects that protect both community and military assets.



RESILIENCE AUTHORITY

Annapolis and Anne Arundel County

resilienceauthority.org

Arundel Center, 44 Calvert St., Annapolis, Maryland