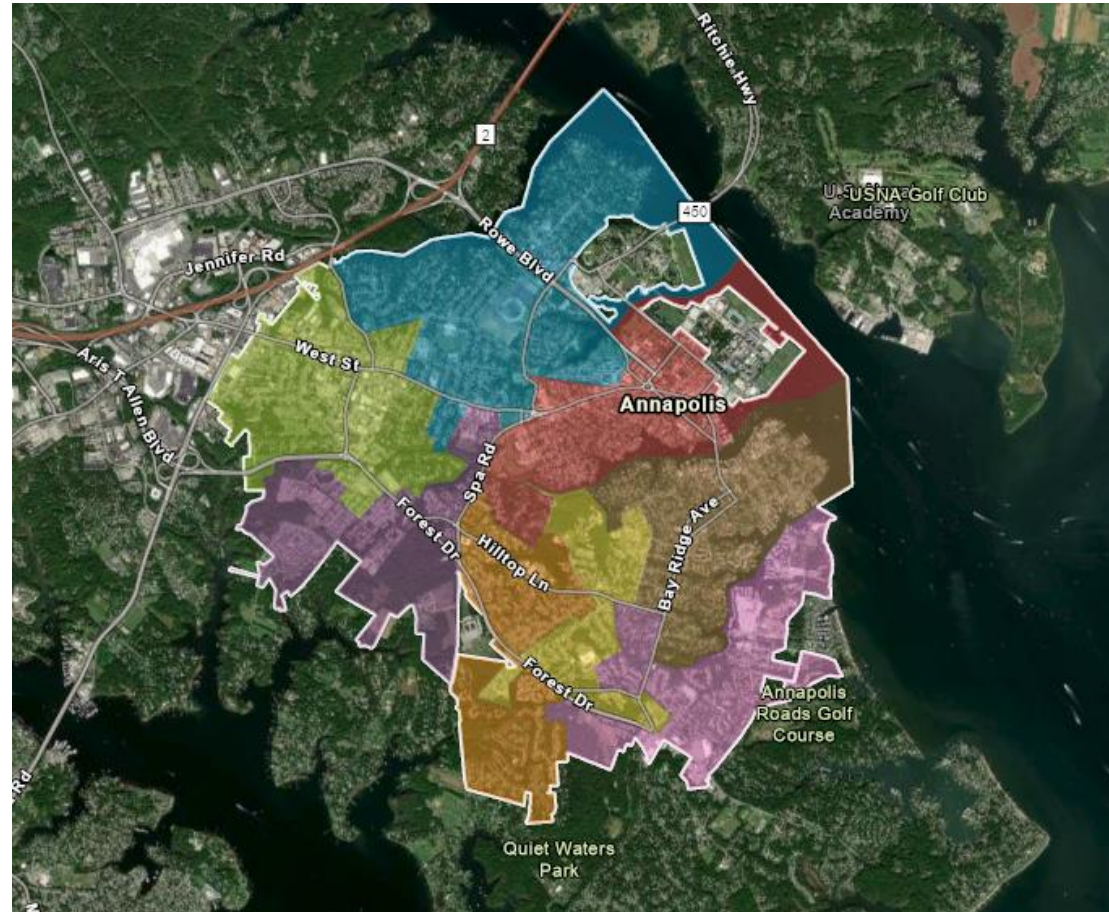
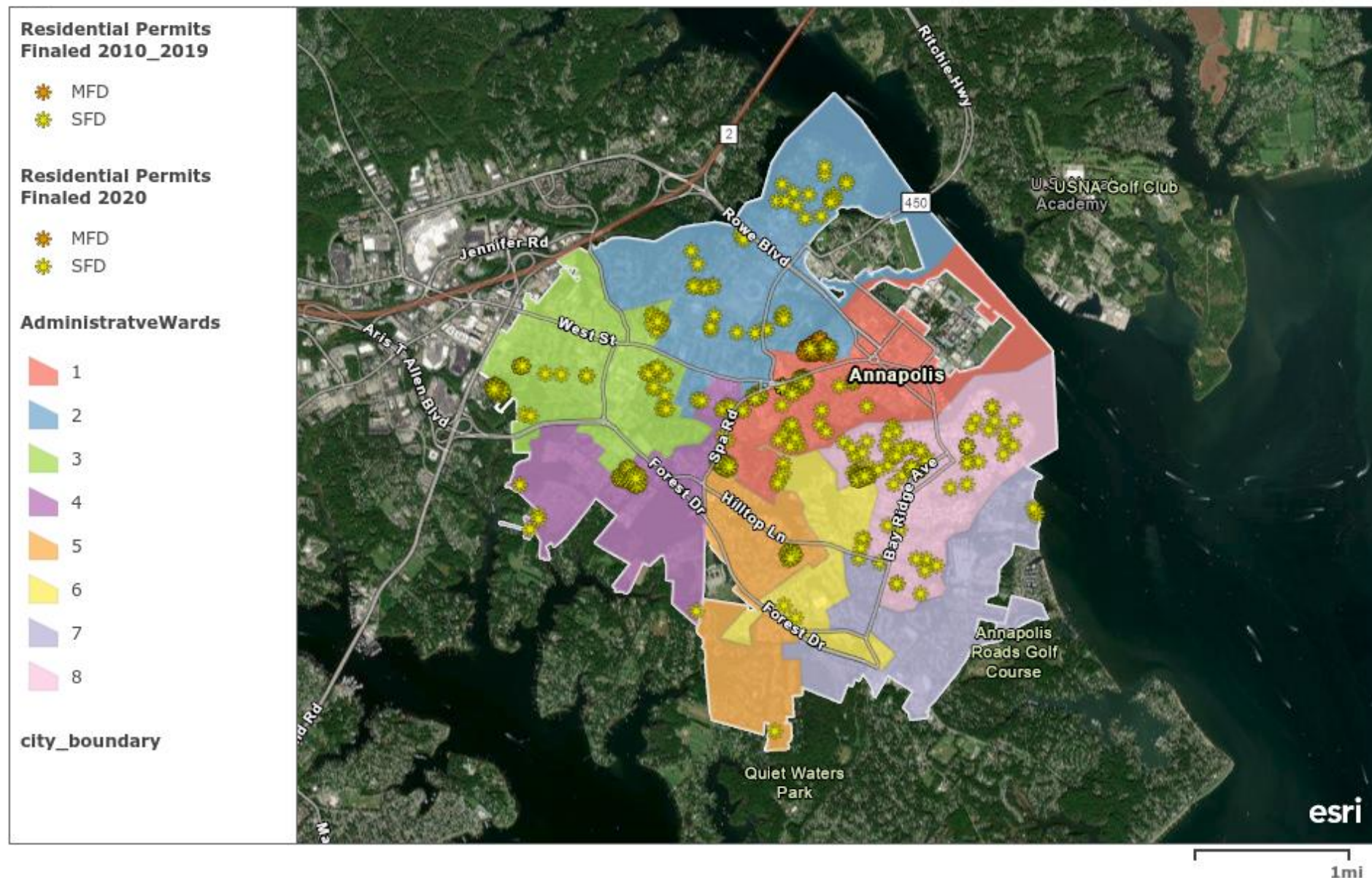


WARDS BOUNDARIES TASK FORCE



**SIGNIFICANT RESIDENTIAL DEVELOPMENT
2010 - 2020**

FINALED RESIDENTIAL PERMITS 2010 - 2020



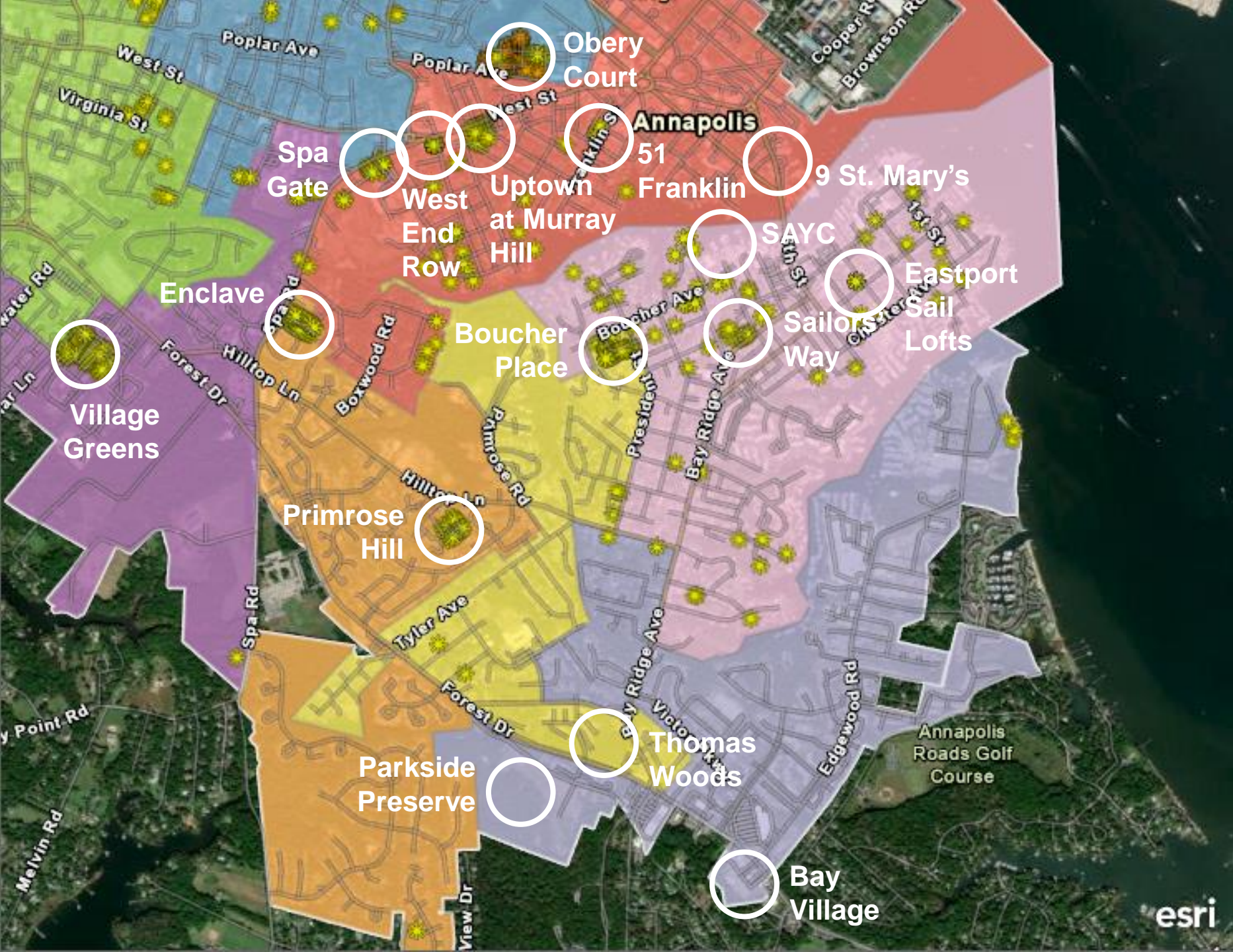
Maryland Department of Transportation (MDOT), Maryland Department of Transportation State Highway Administration (MDOT SHA), MDOT SHA Office of Highway Development (OHD), MDOT SHA Office of Planning & Preliminary Engineering (OPPE), MDOT SHA Regional Intermodal Planning Division (RIPD), MDOT SHA OIT Enterprise Information Services (GIS@mdot.maryland.gov) | Esri | Earthstar Geographics | County of Anne Arundel, VITA, Esri, HERE, Garmin, SafeGraph, METI/NASA, USGS, EPA, NPS, USDA

**MAJOR
RESIDENTIAL
DEVELOPMENT
2010-2020**

(SOUTH)

WARDS

- 1
- 2
- 3
- 4
- 5
- 6
- 7
- 8

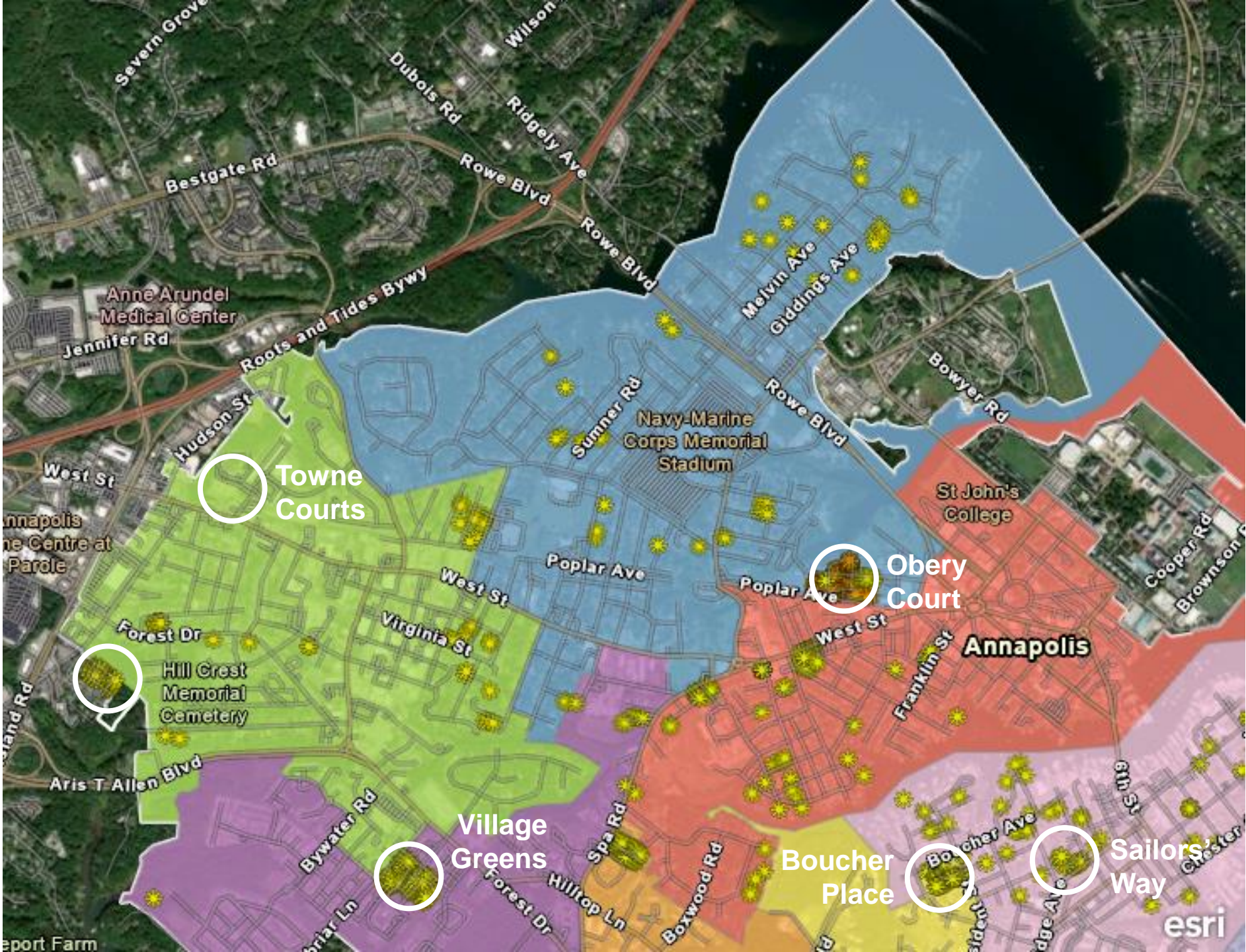


MAJOR
RESIDENTIAL
DEVELOPMENT
2010-2020

(NORTH)

WARDS

- 1
- 2
- 3
- 4
- 5
- 6
- 7
- 8



RECENT DEVELOPMENT SUMMARY

- New residential development in all wards
- Largest concentrations of new residential development in Ward 1 and Ward 8
- New residential development was primarily high-end residential and townhomes
- Very little multifamily housing in comparison to single family attached and detached homes
- Significant amount of redeveloped affordable housing by Housing Authority of the City of Annapolis (HACA) replaced existing housing 1:1



WARD 1

51 Franklin Street



- 9 Units
- Apartments



WARD 1

9 St. Mary's Street



- 8 Units (7 are complete)
- Apartments

WARD 1

Uptown at Murray Hill



- 30 Units
- Single Family Attached and Detached Homes

WARD 1

West End Row



- 18 Units
- Single Family Attached Homes

WARD 1

Spa Gate

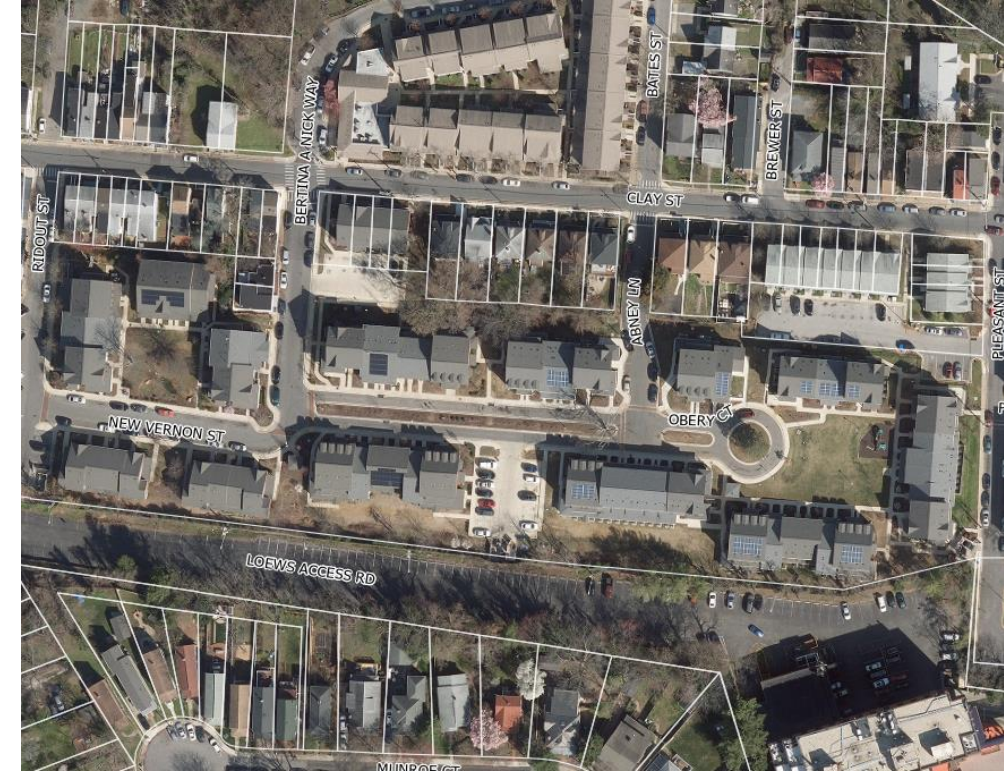


- 19 Units
- Single Family Attached Homes



WARD 2

Obery Court



- 174 Units (20 *New* Units)
- Single Family Attached Homes and Apartments

WARD 3

Towne Courts



- 42 Units
- Apartments



WARD 3

Townes at Neal Farm



- 42 Units
- Single Family Attached Homes and Apartments



WARD 4

Village Greens



- 89 Units
- Single Family Attached Homes

WARD 5

Enclave



- 36 Units
- Single Family Attached Homes

WARD 5

Primrose Hill



- 26 Units
- Single Family Attached and Detached Homes



WARD 6

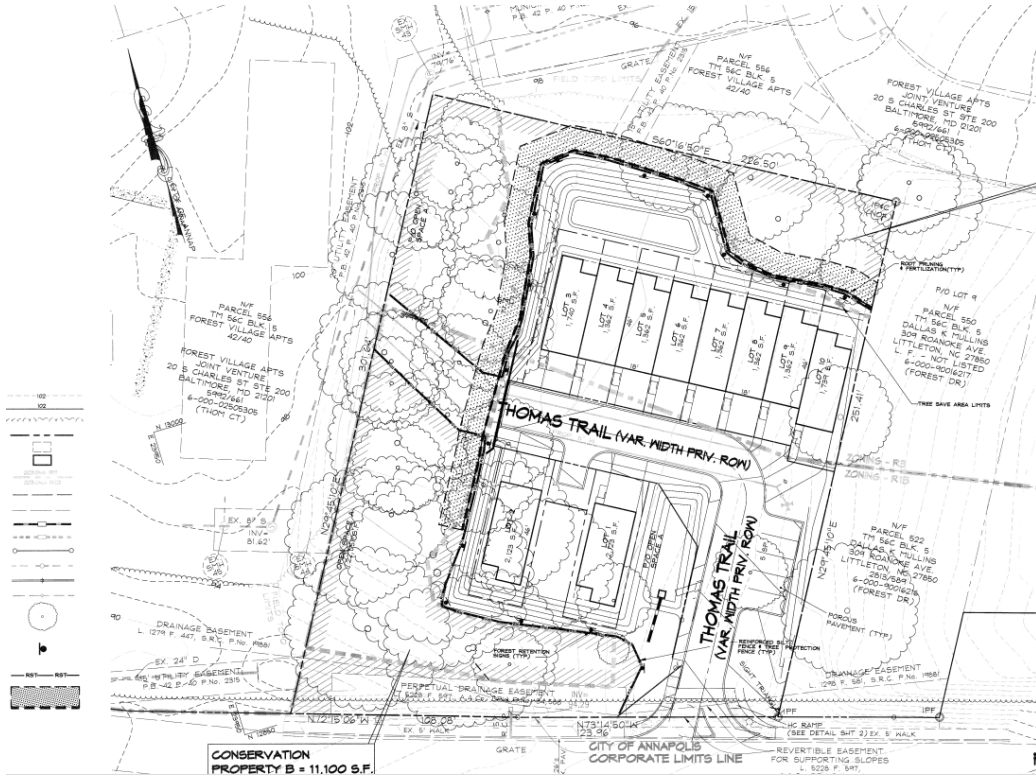
Boucher Place



- 30 Units
- Single Family Attached and Detached Homes

WARD 6

Thomas Woods



- 10 Units
- Single Family Attached Homes

WARD 7

Bay Village (Institutional Community)



- 88 Units
- Assisted Living Apartments

WARD 7

Parkside Preserve (under construction)



- 130 Units
- Single Family Attached and Detached Homes

WARD 8

Sailors Way



- 15 Units
- Single Family Detached Homes

WARD 8

Eastport Sail Lofts



- 10 Units
- Apartments

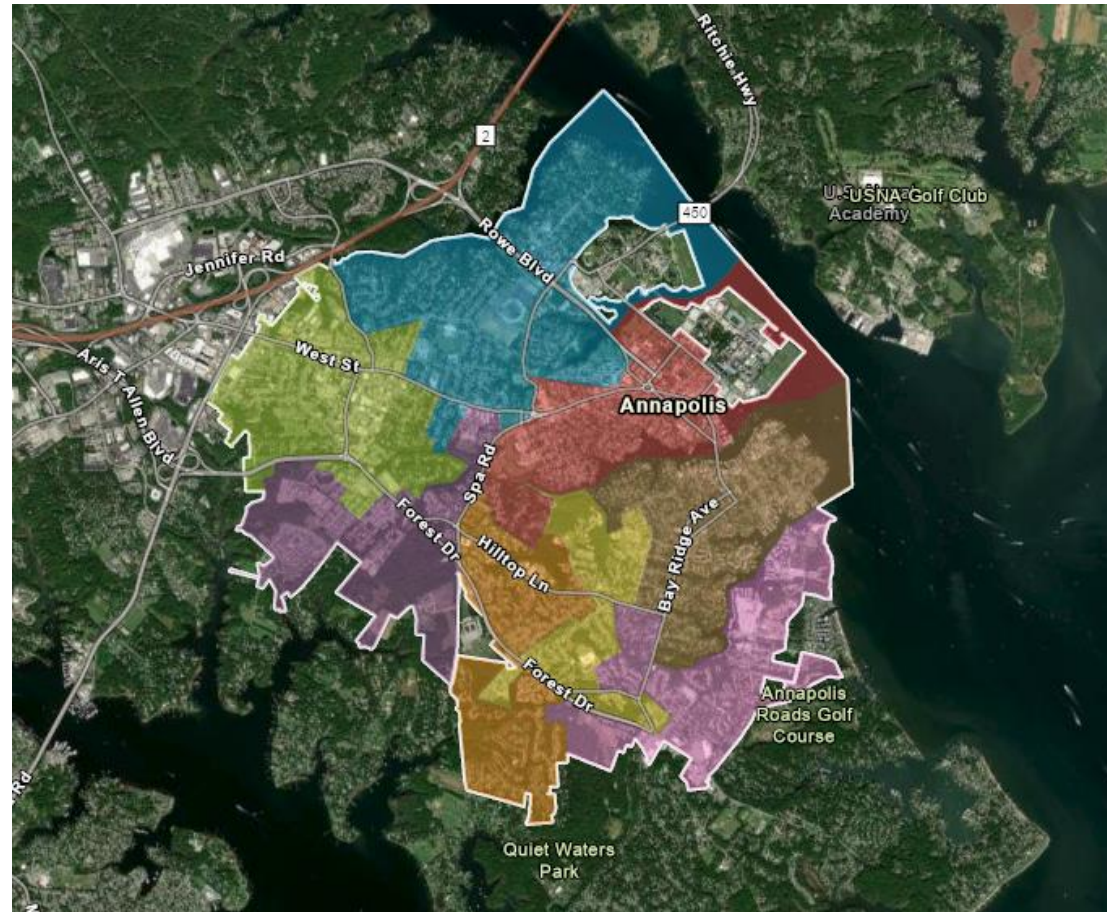
WARD 8

South Annapolis Yacht Center



- 11 Units
- Single Family Detached Homes and Apartments

QUESTIONS ?



Eric Leshinsky, AICP
Chief of Comprehensive Planning
ejleshinsky@annapolis.gov