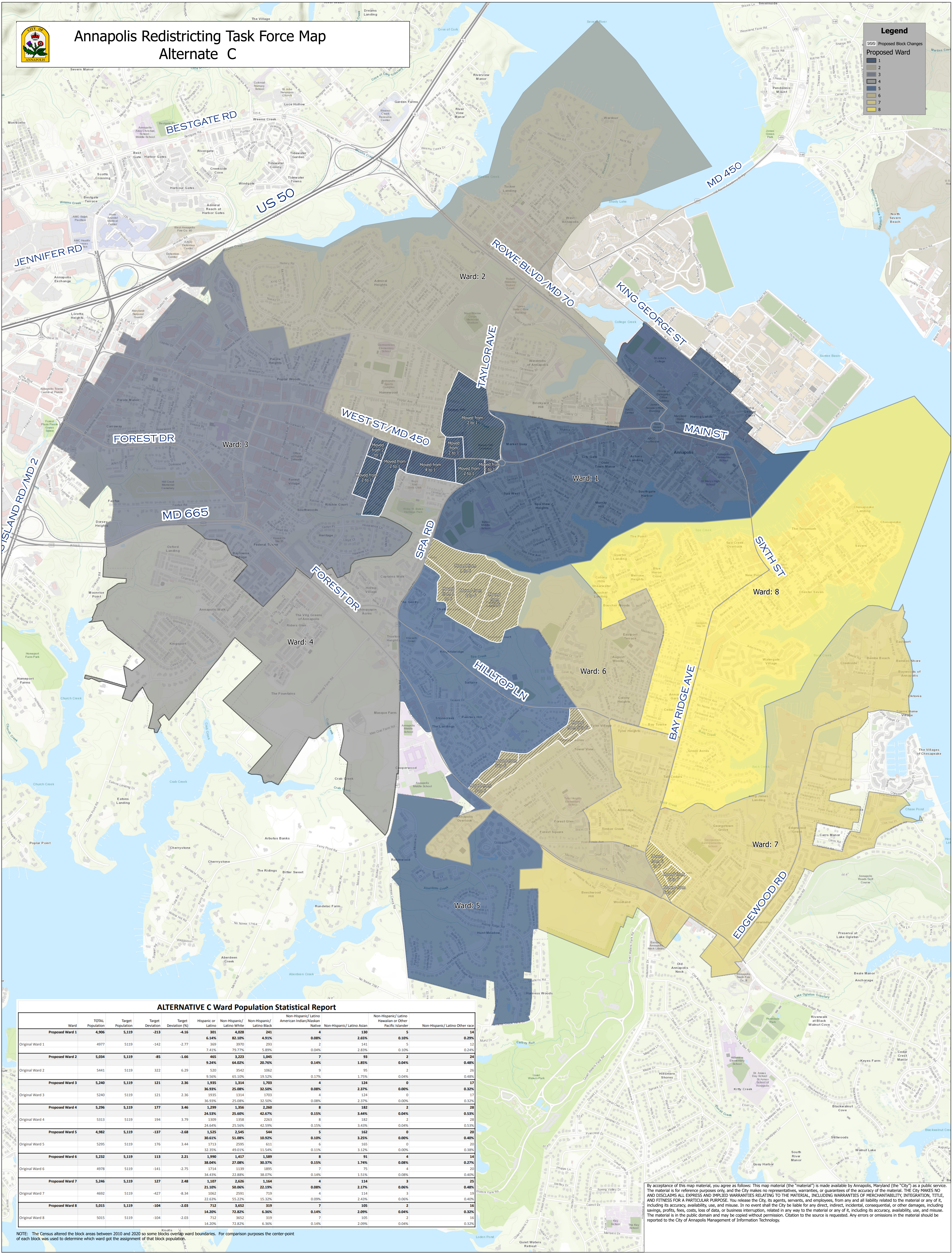
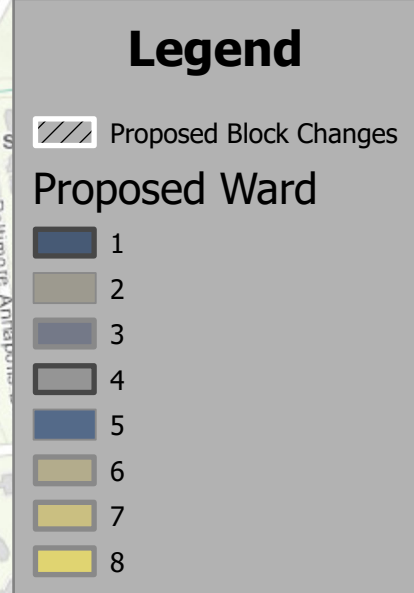




Annapolis Redistricting Task Force Map

Alternate C



ALTERNATIVE C Ward Population Statistical Report

	Ward	TOTAL Population	Target Population	Target Deviation	Target Deviation (%)	Hispanic or Latino	Non-Hispanic/ Latino White	Non-Hispanic/ Latino Black	Non-Hispanic/ Latino American Indian/Alaskan Native	Non-Hispanic/ Latino Asian	Non-Hispanic/ Latino Hawaiian or Other Pacific Islander	Non-Hispanic/ Latino Other race
	Proposed Ward 1	4,906	5,119	-213	-4.16	301	4,028	241	4	130	5	14
Original Ward 1		4977	5119	-142	-2.77	6.14%	82.10%	4.91%	0.08%	2.65%	0.10%	0.29%
	Proposed Ward 2	5,034	5,119	-85	-1.66	465	3,223	1,045	7	93	2	24
Original Ward 2		5441	5119	322	6.29	9.24%	64.02%	20.76%	0.14%	1.85%	0.04%	0.48%
	Proposed Ward 3	5,240	5,119	121	2.36	1,935	1,314	1,703	9	95	2	26
Original Ward 3		5240	5119	121	2.36	36.93%	25.08%	32.50%	0.08%	2.37%	0.00%	0.32%
	Proposed Ward 4	5,296	5,119	177	3.46	1,299	1,356	2,260	8	182	2	28
Original Ward 4		5313	5119	194	3.79	24.53%	25.60%	42.67%	0.15%	3.44%	0.04%	0.53%
	Proposed Ward 5	4,982	5,119	-137	-2.68	1,525	2,545	544	5	162	0	20
Original Ward 5		5295	5119	176	3.44	30.61%	51.08%	10.92%	0.10%	3.25%	0.00%	0.40%
	Proposed Ward 6	5,232	5,119	113	2.21	1,990	1,417	1,589	8	91	4	14
Original Ward 6		4978	5119	-141	-2.75	38.04%	27.08%	30.37%	0.15%	1.74%	0.08%	0.27%
	Proposed Ward 7	5,246	5,119	127	2.48	1,107	2,626	1,164	4	114	3	25
Original Ward 7		4692	5119	-427	-8.34	21.10%	50.06%	22.19%	0.08%	2.17%	0.06%	0.48%
	Proposed Ward 8	5,015	5,119	-104	-2.03	712	3,652	319	7	105	2	16
Original Ward 8		5015	5119	-104	-2.03	14.20%	72.82%	6.36%	0.14%	2.09%	0.04%	0.32%

NOTE: The Census altered the block areas between 2010 and 2020 so some blocks overlap ward boundaries. For comparison purposes the center-point of each block was used to determine which ward got the assignment of that block population.

By acceptance of this map material, you agree as follows: This map material (the "material") is made available by Annapolis, Maryland (the "City") as a public service. The material is for reference purposes only, and the City makes no representations, warranties, or guarantees of the accuracy of the material. THE CITY MAKES NO AND DISCLAIMS ALL EXPRESS AND IMPLIED WARRANTIES RELATING TO THE MATERIAL, INCLUDING WARRANTIES OF MERCHANTABILITY, INTEGRATION, TITLE, AND FITNESS FOR A PARTICULAR PURPOSE. You release the City, its agents, servants, and employees, from any and all liability related to the material or any of it, including its accuracy, availability, use, and misuse. In no event shall the City be liable for any direct, indirect, incidental, consequential, or other damages, including savings, profits, fees, costs, loss of data, or business interruption, related in any way to the material or any of it, including its accuracy, availability, use, and misuse. The material is in the public domain and may be copied without permission. Citation to the source is requested. Any errors or omissions in the material should be reported to the City of Annapolis Management of Information Technology.