

City Council Work Session

DRAFT
Comprehensive Plan

March 28, 2024



Example of proposed Ward profile

(each ward would have its own map and profile included in both the Action Plan executive summary and Chapter 1: Introduction of the full Plan)



WARD 7 PROFILE

Municipal Growth

- Ward 7 includes two sites, identified on the map as "Future Growth Areas", which are eligible for annexation into the City. A decision to annex these properties is initiated by the property owners, not the City. **See page 74 for additional information.**

Land Use

- Land uses in Ward 7 will not change substantially. For the office and commercial properties on Bay Ridge Road, the Plan proposes more efficient use of these sites in the form of mixed use to address community needs, if and when these properties redevelop. **See pages 98 and 106 for additional information.**
- The Plan recommends prioritizing several greenway connections to improve existing natural resources and expand on them. **See page 120 for additional information.**

Housing

- Ward 7 currently includes a wide variety of housing options for all income levels. Effort to create additional housing options will be focused on more efficient use of the Ward's office and commercial properties, and will be aimed at the workforce population.

Transportation

- The Plan recommends transit improvements that will facilitate increased ridership for Ward 7 residents. These include adding stops along Forest Drive for the commuter buses, expanded shuttle service to Downtown, and on-demand service. **See page 200 for additional information.**
- The Plan recommends major bicycle infrastructure improvements along Forest Drive and Bay Ridge Avenue to create safer and more viable mobility options and ultimately reduce automobile dependency. **See pages 190-199 for additional information.**

Community Facilities

- The Plan recommends equitable park and water access improvements which include the recently created Elktonia/Carr's Beach Park. **See pages 218-233 for additional information.**

Arts, Culture, & Historic Preservation

- The Plan recommends a citywide emphasis on arts and cultural programming, and historical and cultural preservation. **See pages 272 and 278 for additional information.**

Environmental Sustainability

- The Plan recommends environmental enhancements to numerous sites where opportunities exist for improved stormwater management, tree canopy expansion, habitat restoration, and other ecological benefits.
- The Plan recommends a citywide reduction in greenhouse gas emissions and investments in mobility infrastructure including access to electric vehicle charging, bus fleet transition, and safer bicycle/pedestrian routes will be a primary means of achieving the reduction.

Water Resources

- The Plan recommends a citywide focus on improving water quality through stormwater best management practices (BMPs), shoreline improvements, and maintenance and upgrades to wastewater infrastructure. **See pages 334-345 and 352-355 for additional information.**

Examples of form-based zoning already in Annapolis

(in each case, the zoning has led to a more consistent and predictable development pattern)



Downtown



Eastport



Inner West Street



Germantown / Homewood

Example of a location where form-based zoning could lead to more predictable and consistent development outcomes, and address community needs and preferences.



West Street at Brewer Avenue

Example of a location where form-based zoning could lead to more predictable and consistent development outcomes, and address community needs and preferences.



Forest Drive at Tyler Avenue



Forest Drive at Tyler Avenue



Forest Drive at Gemini Drive



Forest Drive at Gemini Drive

Example of what a form-based zoning looks like

(example from Kingston, NY)

L. NEIGHBORHOOD BUSINESS

1. Description	
A Neighborhood Business is intended to complement WALKABLE neighborhoods by facilitating a small increment of mixed use in a pedestrian-friendly ground floor retail or service use accessed from the sidewalk. Residential units, storage or small offices may be located on upper floors.	
2. Required Building Dimensions	
Building Width	60' max
3. Allowed Intensity	
Ground Floor Footprint / Commerce use floor area	3,500 sf or less in T4 / T5 3,000 sf or less in T3
Number of units per building	Unrestricted (upper floors only)
4. Allowed Frontage Types (Sec 405.13)	
Shopfront and Dooryard are permitted.	
5. Required PRIVATE OPEN SPACE Dimensions	
No requirement	
6. Required Pedestrian Access	
Must provide pedestrian access from the front street sidewalk.	

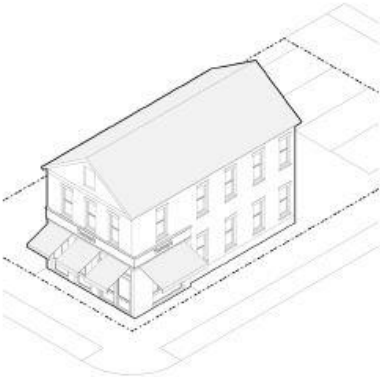


Figure 405.12.L: Examples of Neighborhood Business Buildings:



G. LIVE/WORK BUILDING

1. Description	
The Live/Work Building Type is a small to medium-sized attached or detached structure that is allowed to house a flexible combination of limited commercial functions and the primary residential function. The commercial / flex space is typically on the ground floor, accessed from the street sidewalk. Both the commercial / flex space and the residential unit are owned by one entity.	
2. Required Building Dimensions	
Building Width	18' min / 50' max
3. Allowed Intensity	
Number of units per building	2 max
The floor area of the commercial/flex space shall be smaller than the floor area of the primary residential space.	
4. Allowed Frontage Types (Sec 405.13)	
Shopfront, Forecourt, Dooryard, or Stoop are permitted.	
5. Required PRIVATE OPEN SPACE Dimensions	
Required behind the main body of the building	
Width	10' min
Depth	10' min
Area	100 sf min
6. Required Pedestrian Access	
Pedestrian access shall be provided from a front (preferred) or side street sidewalk.	
The commercial/flex space and DWELLING UNIT shall have separate entries.	

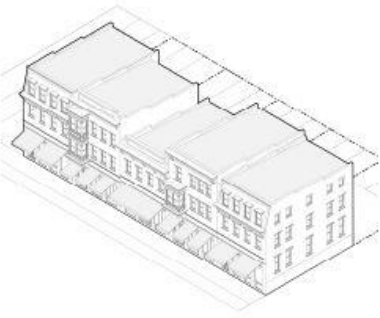
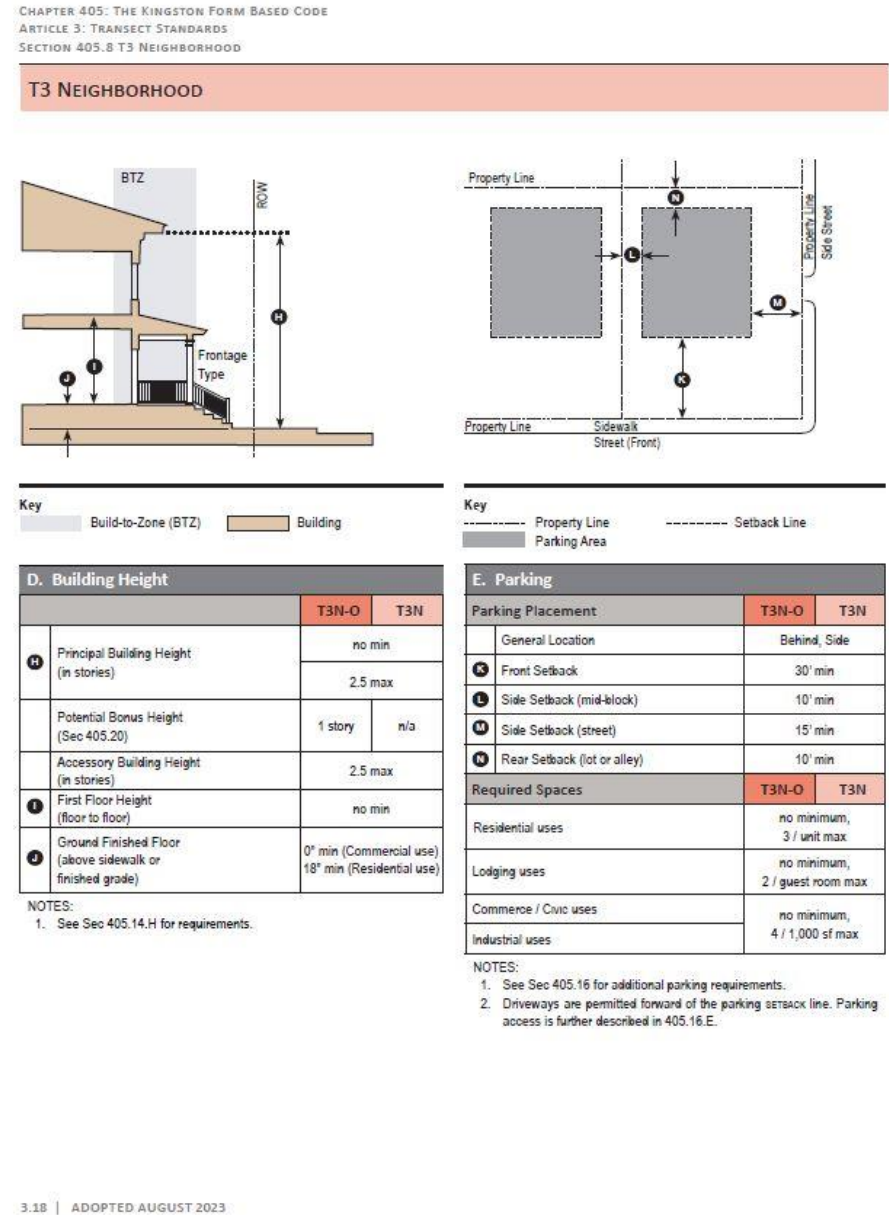
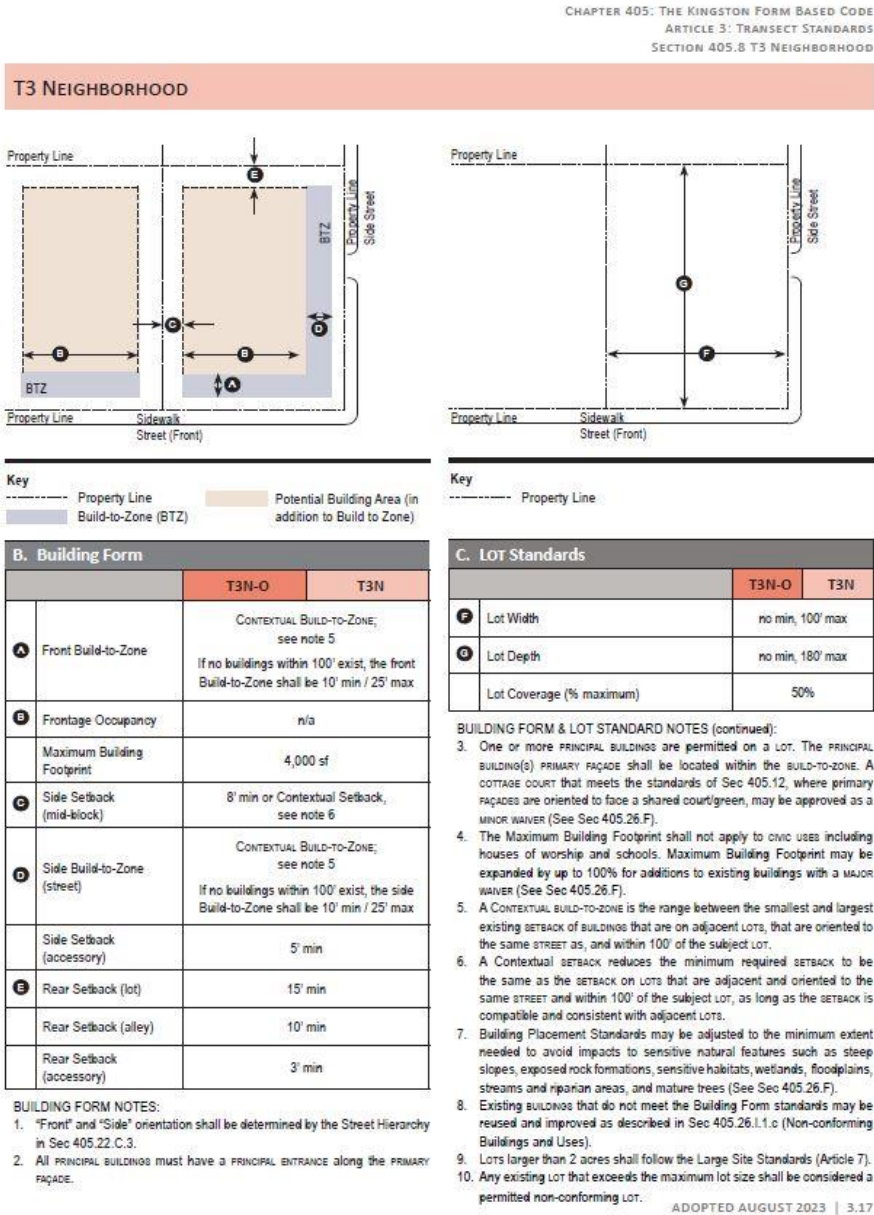


Figure 405.12.G: Examples of Live/Work Buildings:



Example of what a form-based zoning looks like

(example from Kingston, NY)



Major Policy Areas of Annapolis Ahead 2040

(excerpt from Action Plan and Chapter 1: Introduction of the full Plan)

NOTE:
*‘Public Safety’
will be added
to this list*

PLAN PRIORITIES

Implementation of this Plan’s vision will rely on multiple coordinated efforts but it begins with goals, performance measures, and recommended actions which reinforce the vision. These priorities also help illustrate what distinguishes this Plan from past comprehensive plans. In the coming years, all City projects, programs, and policies should advance these priorities.

Thriving City

- 1 Housing Access for All**
Expand the range of housing choices that are accessible both in terms of geography and affordability, and are responsive to the needs of renters and owners of low to middle income.
- 2 Neighborhood Preservation**
Promote context-sensitive neighborhood-serving development that reduces blight and physical incongruity while fostering visual harmony and cohesion.
- 3 Inclusive Economic Growth**
Advance policies and programs which expand opportunities for local entrepreneurship and underrepresented groups to contribute to the City’s economic growth.
- 4 Sustainable Development**
Prioritize walkable places, mixed-use development, greenway connections, small area planning oriented to creeksheds, and minimize the negative impacts to environmentally sensitive areas.

Functional City

- 5 Pedestrian, Bicycle, and Transit Connectivity**
Build safe, comfortable, and connected alternative mobility networks to encourage active transportation, alleviate traffic congestion, and reduce automobile dependency.
- 6 Equitable Public Water Access**
Increase the amount and quality of waterfront space that is publicly accessible for a variety of water-based activities, particularly on creeks and in neighborhoods with limited public water access today.
- 7 Citywide Cultural Programming and Preservation**
Expand the reach of arts initiatives and historic preservation through the advancement of inclusive programs, the promotion of the City’s diverse history, and expanded cultural opportunities for all residents and in all sectors of the city.

Adaptive City

- 8 Climate Ready Infrastructure**
Mitigate the impacts of climate change through infrastructure adapted to be more resilient to rising sea levels, storm surge, flooding, extreme temperatures, and other climate-induced environmental changes.
- 9 Lower Carbon Footprint**
Reduce carbon emissions in the city through coordinated policies and investment that promote renewable energy, energy efficiency and conservation, carbon sequestration, the application of new technologies, and ongoing monitoring.
- 10 Prioritized Environmental Assets**
Proactively plan for the protection, restoration, enhancement, and maintenance of the City’s natural resources as a linked network of greenways that will provide innumerable benefits to residents.