

City of Annapolis Comprehensive Plan City Council and Planning Commission Work Session



April 18, 2019

Agenda

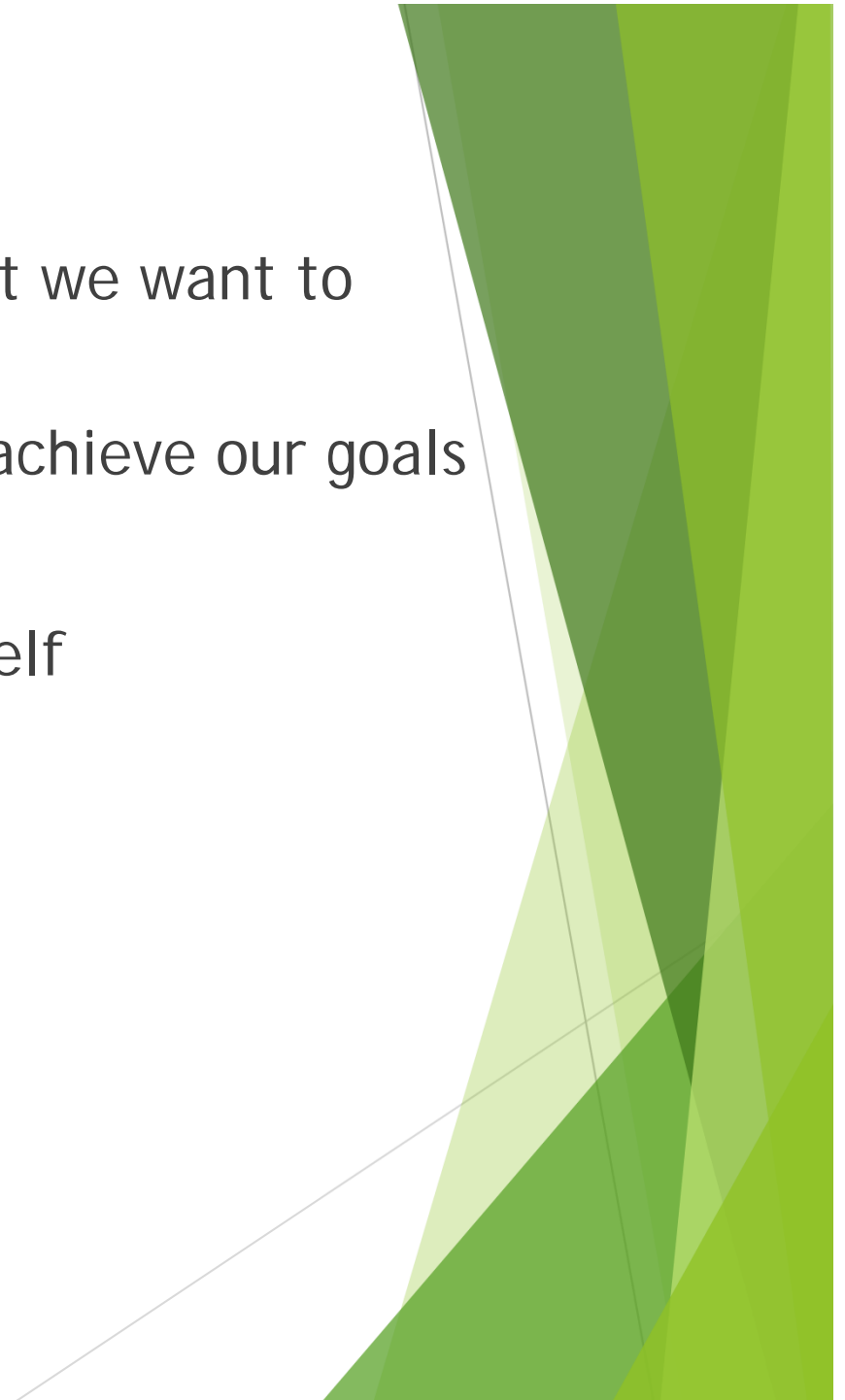
- ▶ Introductions
- ▶ What is Planning?
- ▶ What is Zoning?
- ▶ What is a Comprehensive Plan?
- ▶ What do the City Council and the Planning Commission want to see in the Comprehensive Plan?

Your Friendly Neighborhood Planning Commission

Name	Appointed	Reappointed	Expires
David Iams	2/27/12	9/28/17	6/30/22
Robert H. Waldman, Chair	9/8/95	9/21/18	9/21/23
Alex Pline	7/21/18	-	7/21/23
William Herald	7/26/10	11/9/15	6/30/20
George Matthews	9/21/15	11/9/15	6/30/20
Ben Sale, Vice- Chair	9/22/14	11/9/14	6/30/19
Diane Butler	1/14/19	-	1/14/24

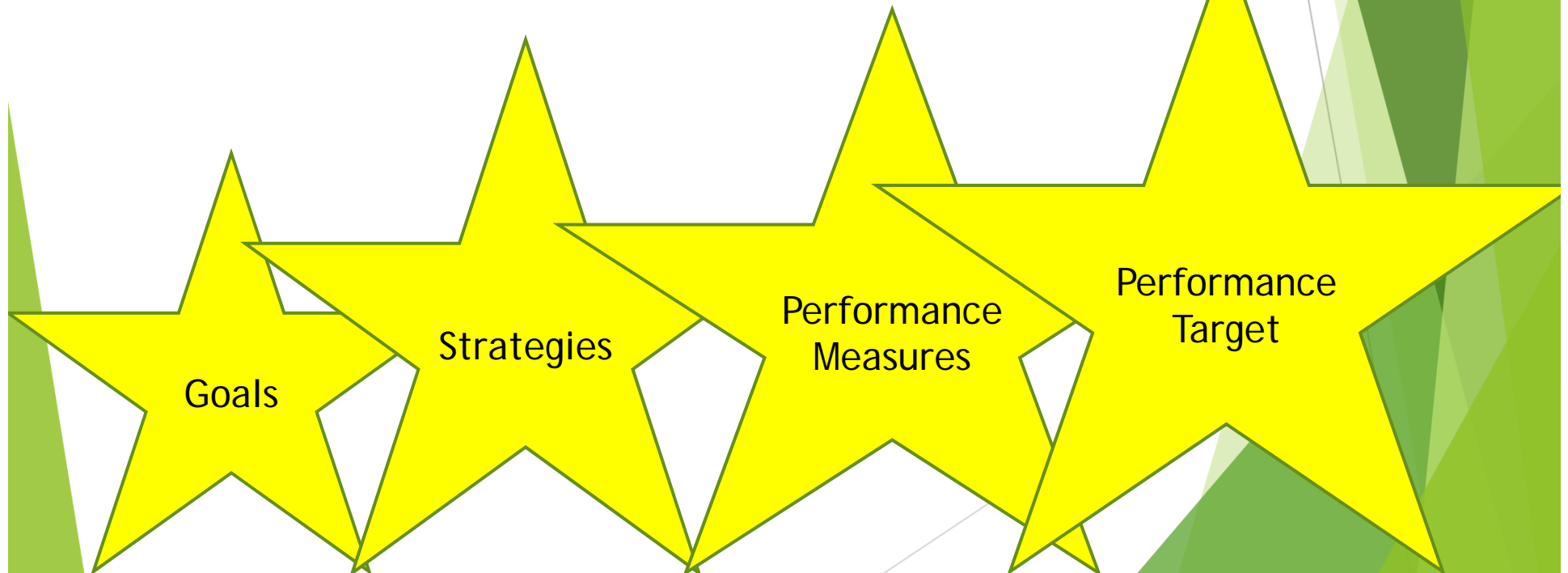
What is Planning?

- ▶ Not what will happen, but what we want to happen
- ▶ Allocates resources so we can achieve our goals
- ▶ Flexible
- ▶ Doesn't change anything by itself



What is Planning?

- ▶ Not what will happen, but what we want to happen
- ▶ Allocates resources so we can achieve our goals
- ▶ Flexible
- ▶ Doesn't change anything by itself

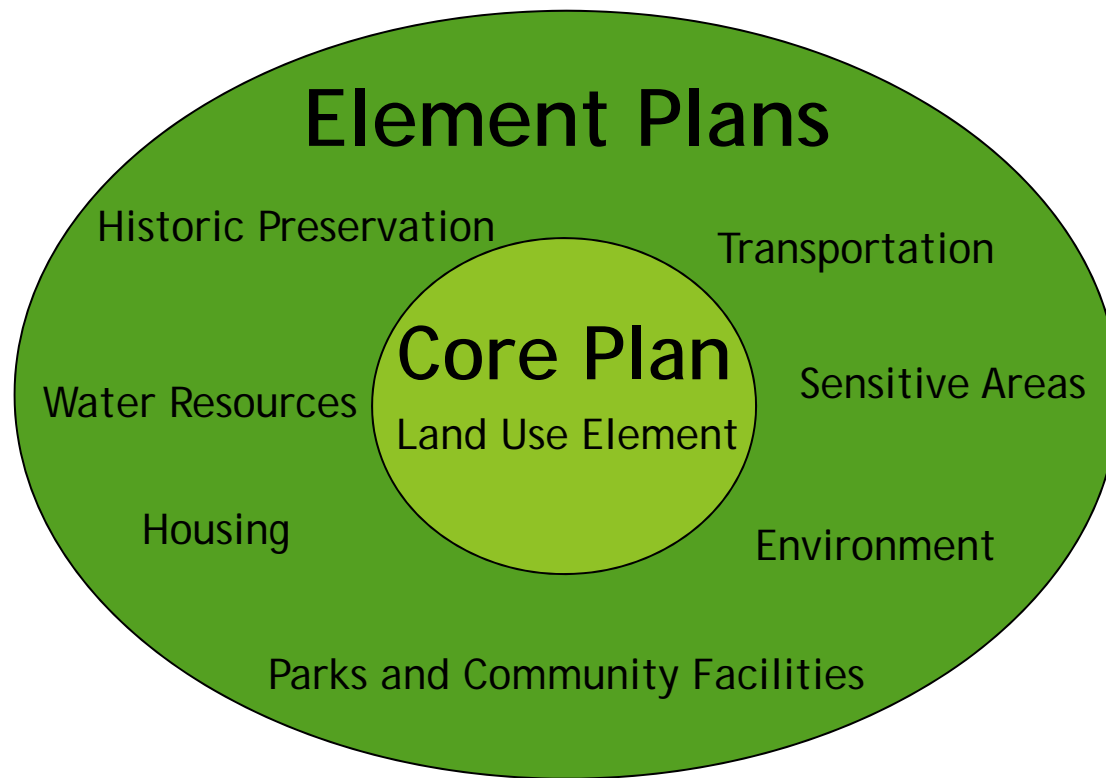


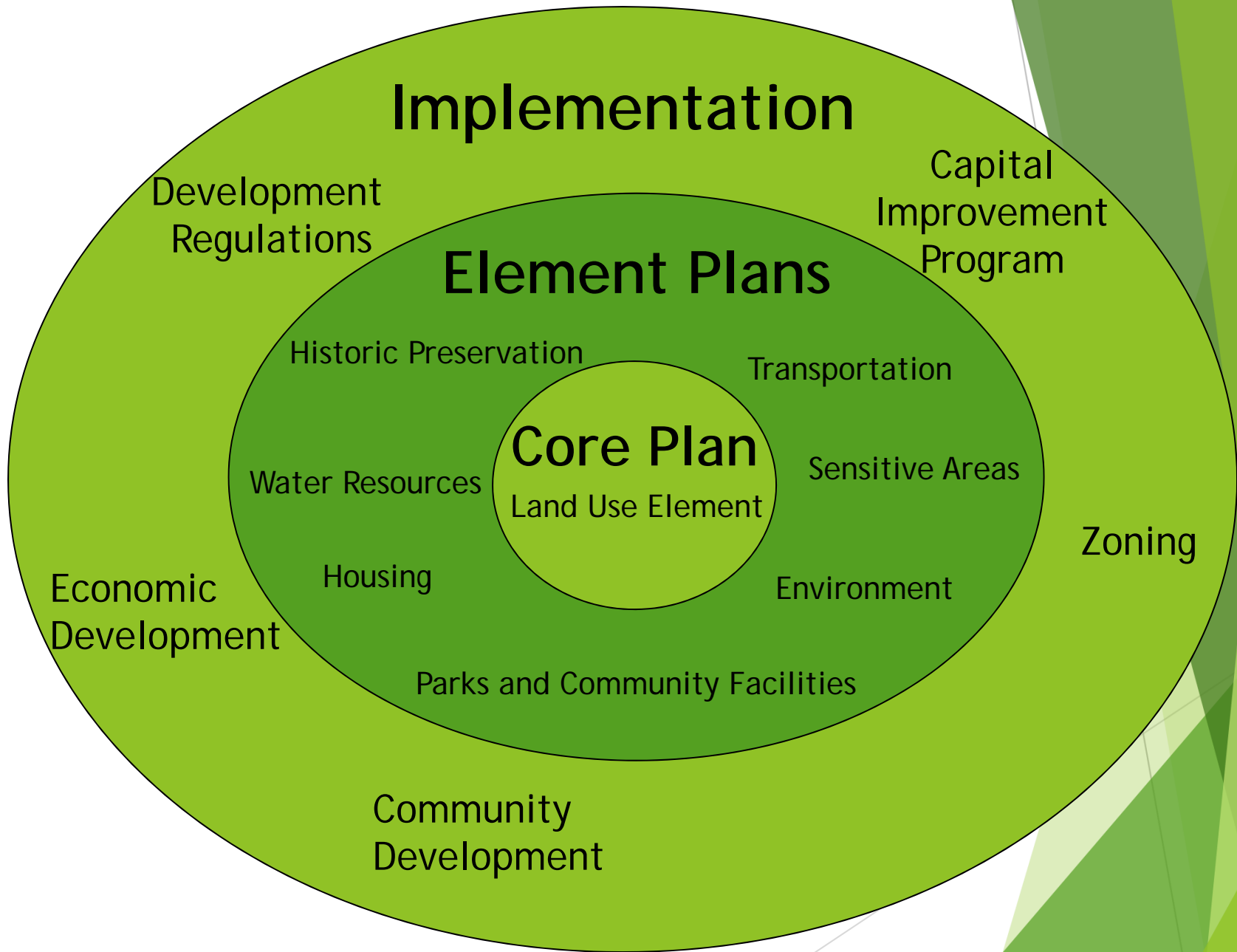
Comprehensive Plan Concept

Core Plan

Land Use Element

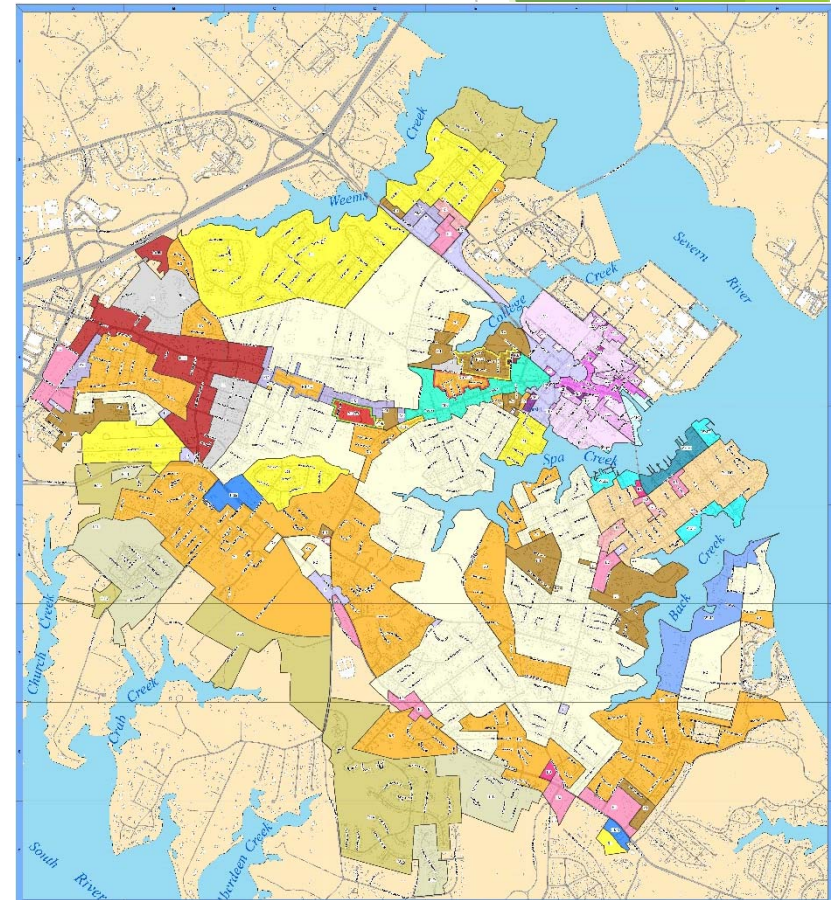






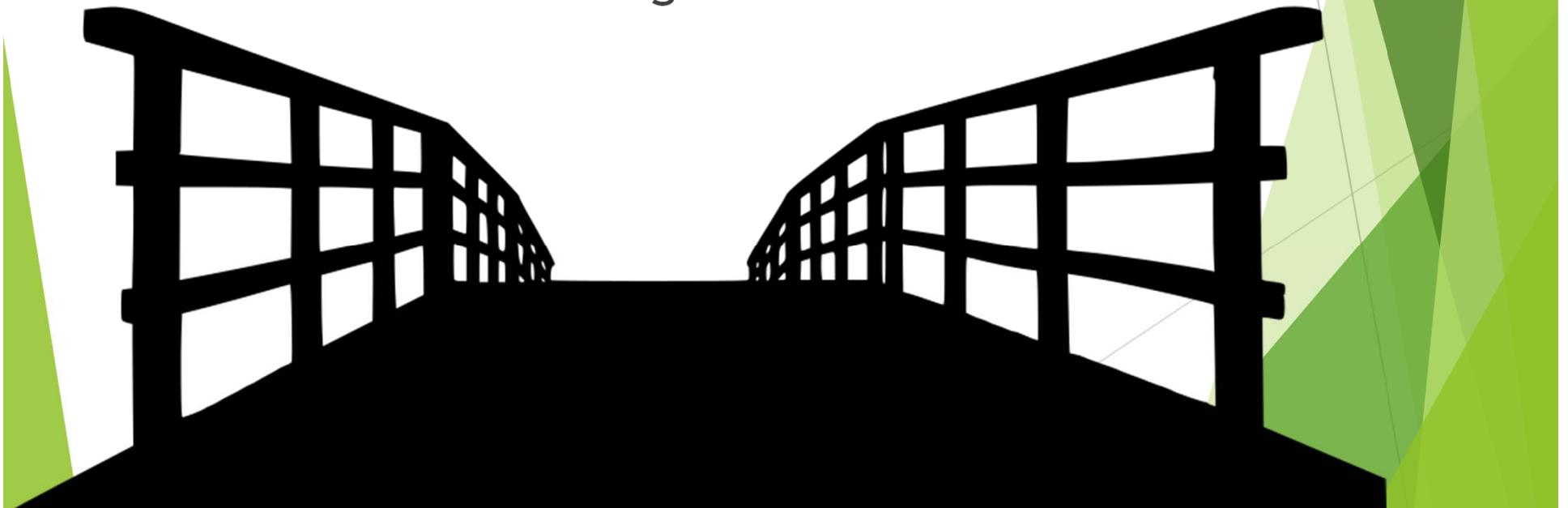
What is Zoning?

- ▶ Zoning is a law that controls land use
- ▶ Two main types of zoning:
 - ▶ Euclidian zoning
 - ▶ Form-based zoning
- ▶ Text and Map



What is a Comprehensive Plan?

- ▶ A Comprehensive Plan looks approximately 20 years ahead
- ▶ It includes:
 - ▶ Goals and strategies to achieve the goals, with specific performance measures and targets



Per the Land Use Article, Annotated Code of Maryland

- ▶ § 3-102. Elements -- Noncharter counties and municipal corporations.
- ▶ (a) Required elements. --
- ▶ (1) The planning commission for a local jurisdiction shall include in the comprehensive plan the following elements:
 - ▶ (i) a community facilities element;
 - ▶ (ii) an area of critical State concern element;
 - ▶ (iii) a goals and objectives element;
 - ▶ (iv) a land use element;
 - ▶ (v) a development regulations element;
 - ▶ (vi) a sensitive areas element;
 - ▶ (vii) a transportation element; and
 - ▶ (viii) a water resources element.



Annapolis Ahead. Bridging Barriers.
Connecting Communities.

Welcome to the ABCs of planning in Annapolis. The City of Annapolis Plan, serving as the 2020 update to the City's comprehensive plan, will focus on protecting and enhancing neighborhood health, supporting economic growth and diversity, and ensuring that the local environment is resilient.

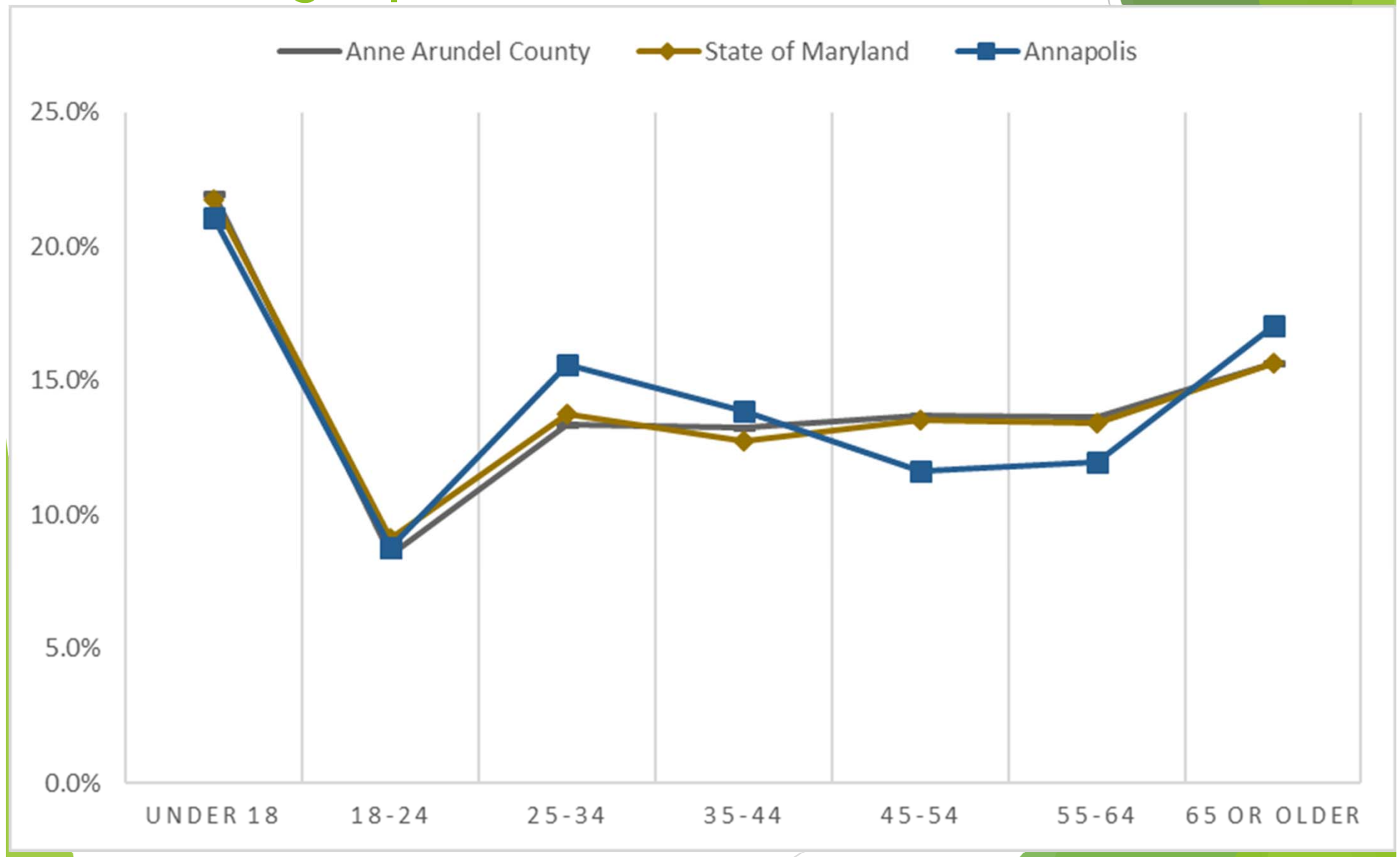
What do the City Council and the Planning Commission want to see in the Comprehensive Plan?



First Steps

- ▶ Demographics
- ▶ Economic analysis and market trends
- ▶ Existing land use map and land capacity
- ▶ Growth trends
- ▶ Health implications

Demographics

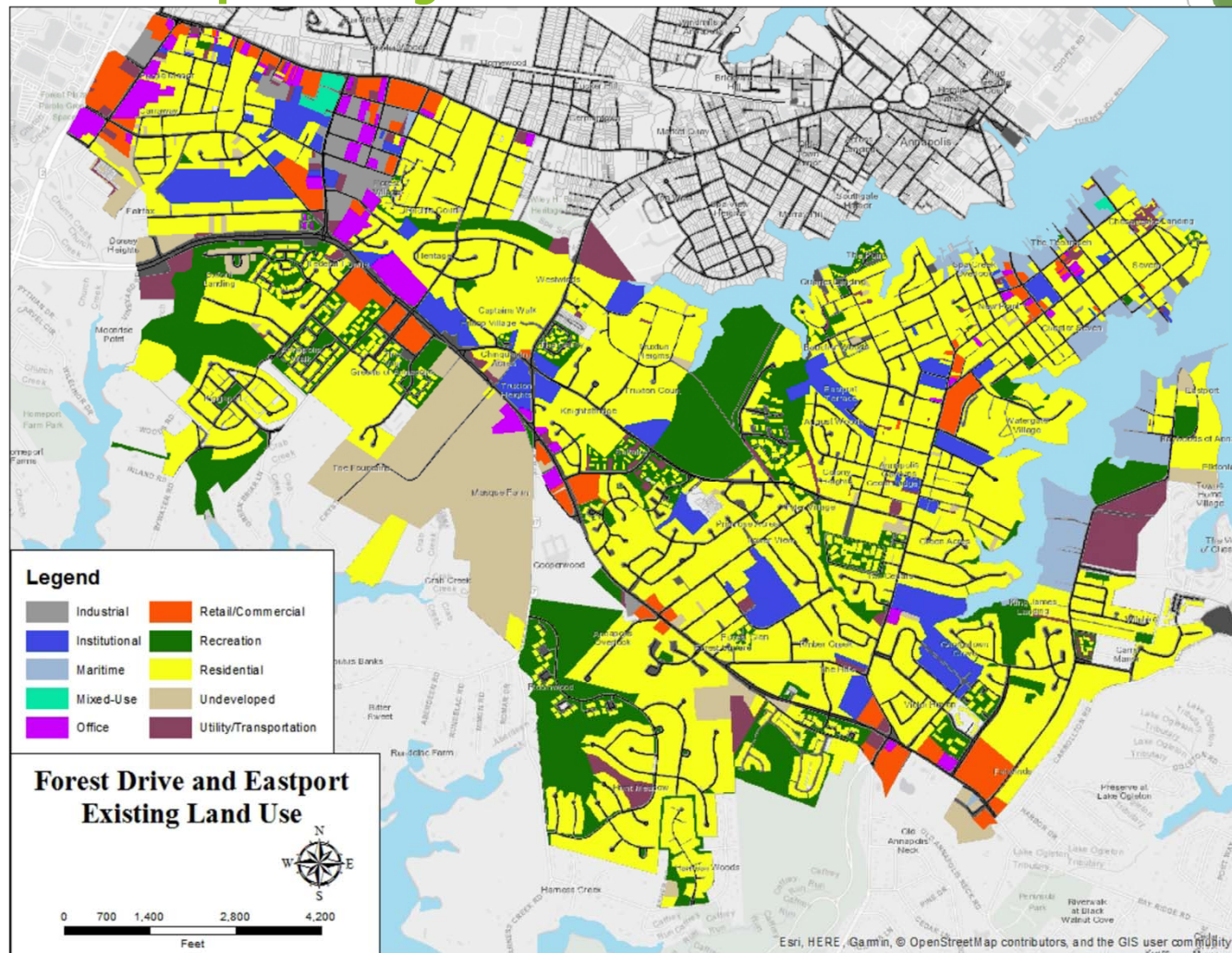


Economic Analysis and Market Trends

- ▶ Placemaking
- ▶ The Knowledge Age
- ▶ Improved Connectivity
- ▶ Increased Diversity
- ▶ Affordable Housing
- ▶ New Mobility

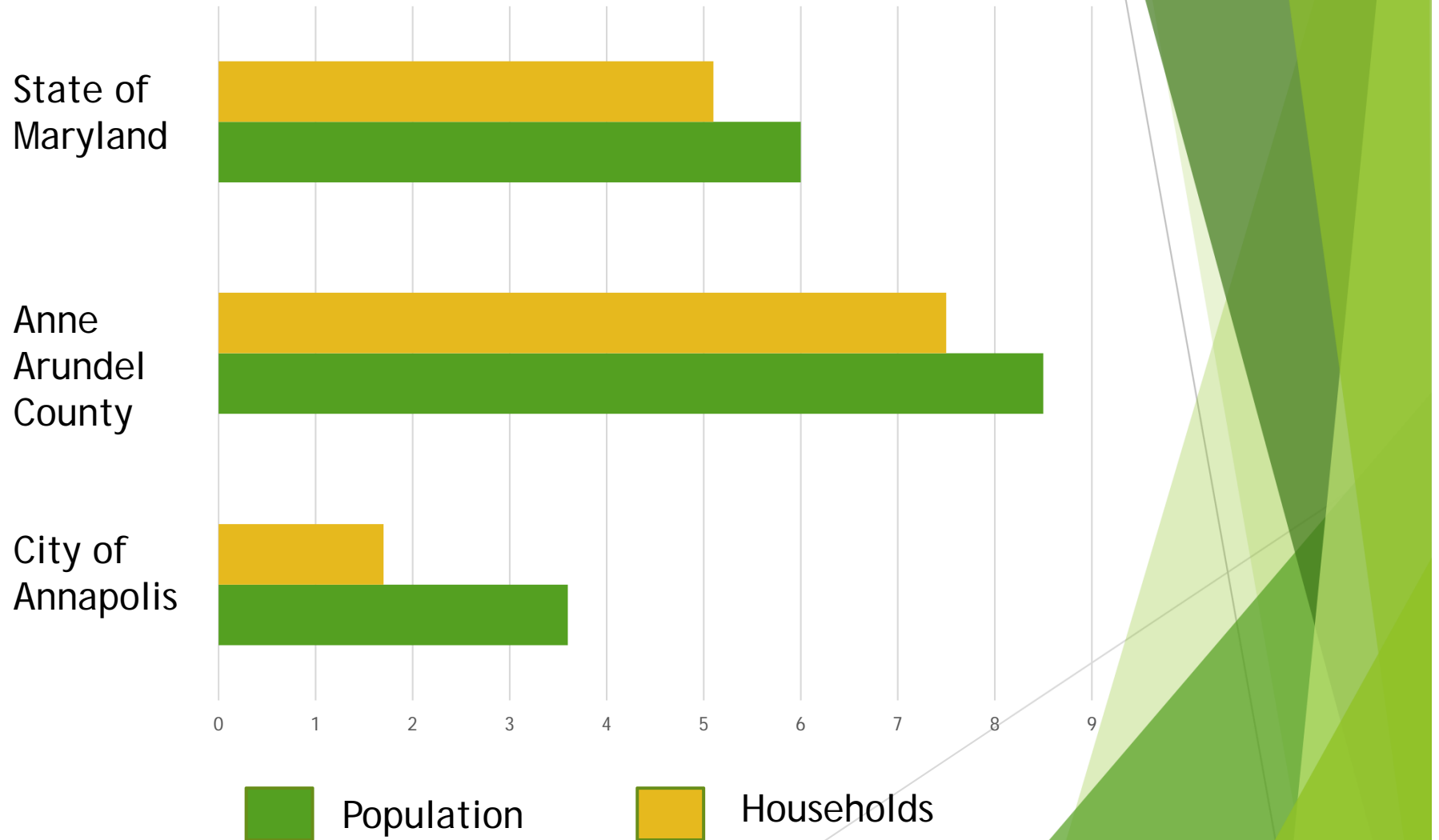


Existing Land Use Map and Land Capacity

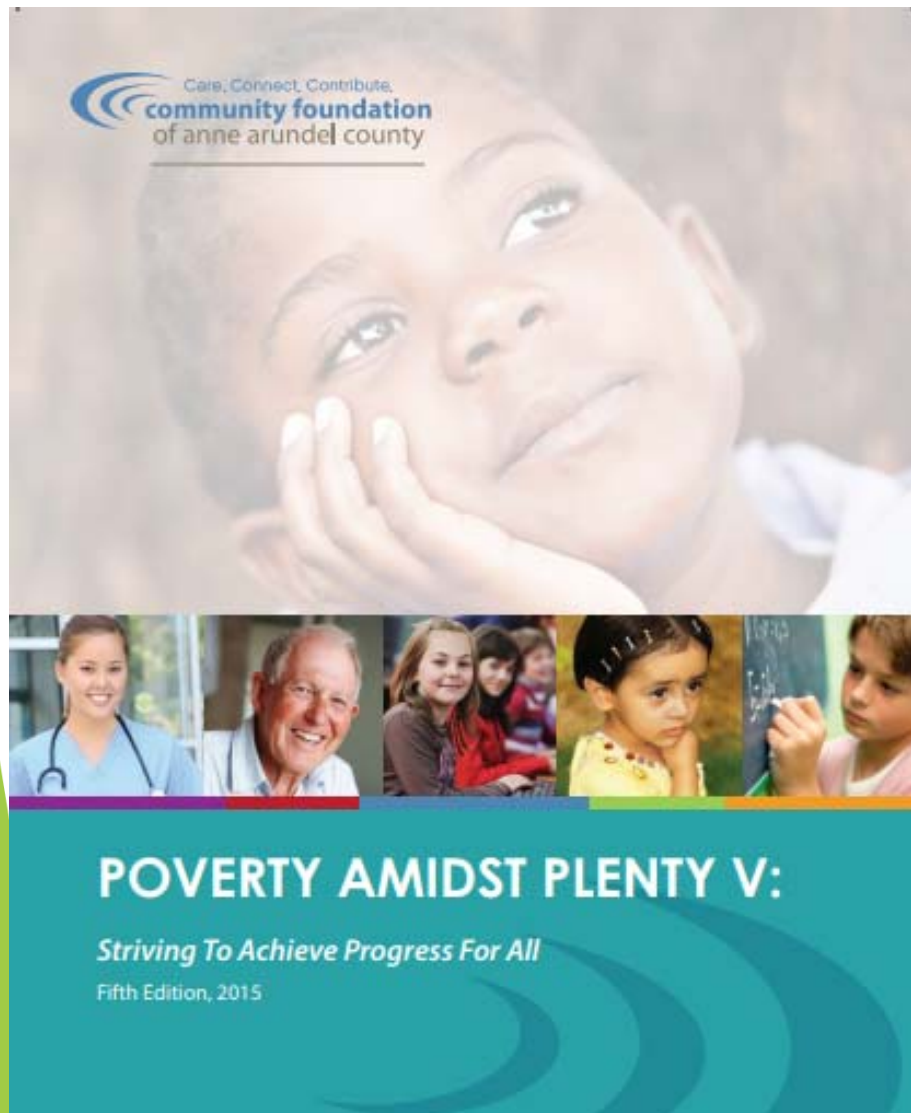


Growth Trends

Change in Percent from 2010 to 2018



Health Implications



- ▶ Transportation
- ▶ Obesity
- ▶ Food Deserts
- ▶ Income
- ▶ Environment
- ▶ Poverty
- ▶ Economic Opportunity
- ▶ Housing
- ▶ Homelessness
- ▶ Youth
- ▶ Education
- ▶ Mental Health
- ▶ Substance Abuse
- ▶ Seniors

Next Steps

